

**GEORGIAN COURT UNIVERSITY  
PRESIDENT'S ANNUAL REPORT  
AND HONOR ROLL OF DONORS 2006-2007**

Integrity

Respect

Compassion

Justice

Service



**GEORGIAN COURT UNIVERSITY**

*A tradition of excellence... a future of success*

LAKWOOD, NEW JERSEY



"Do unto others as you would have  
them do unto you."

JESUS CHRIST

The values and notions of justice that impact us today are derived and synthesized from those commonly shared, timeless qualities of justice described by Socrates, Locke, Hume, Spinoza, and others.

Aristotle tells us that the prevalence of injustice makes clear the meaning of justice.

On the virtue called justice, Saint Augustine declared, "Justice is that ordering of the soul by virtue of which it comes to pass that we are no man's servant, but servants of God alone."

For St. Thomas Aquinas, "Justice is a certain rectitude of mind, whereby a man does what he ought to do in the circumstances confronting him."



# Social

Social justice enhances the human well-being and helps meet the basic needs of all people, with particular attention to the needs and empowerment of people who are vulnerable, oppressed, and living in poverty. As a Catholic institution of higher education, Georgian Court University embraces justice as one of the Mercy core values, and that value is lived by students, examined by faculty, and supported by staff. In 2006–2007, the university sought dialogue that embraced diverse perspectives seeking solutions to the challenges of our time.

One measure of our institution is how we enhance the life and dignity of the human person. We are one human family, whatever our national, racial, ethnic, economic, or ideological differences. In Catherine McAuley's words, "It is for God we serve the poor and not for thanks."

Justice



## DEAR FRIENDS and Supporters of Georgian Court,

GOD HAS SHOWERED GEORGIAN COURT WITH ABUNDANT BLESSINGS this past year that pave the way for a glorious Centennial in 2008–2009.

From developing three new majors and a graduate strand in autistic studies, to breaking ground for the new Wellness Center, to enrolling the largest freshman class in more than 30 years, to a successful Campaign for Georgian Court, the university mission and Mercy core values are thriving.

This annual report focuses not only on our achievements that are the collective work of faculty, staff, administration, and the Board of Trustees, but also on the amazing efforts of seven faculty members and staff to bring the Mercy core value of justice to life in the classroom and in the community. These members of the GCU community are performing the works of mercy, showing compassion to those who are suffering by bringing their stories of injustice to light.

History professor Scott Bennett brought the case of Darfur to our community by bringing the director of Rights Work International to campus. Psychology professor Sandy Prucha, a Sister of Mercy, underscored the horror and reality of human trafficking across borders and in our own backyard. Robin Solbach, director of counseling, brought the healing, cathartic Clothesline Project to campus to help people who were or knew victims of sexual violence.

Evelyn Quinn, associate provost for academic support and student life programs, brought the paradoxically life-affirming message of a Rwandan genocide survivor to speak to our



freshmen about the value of life and forgiveness. Cathy Darcy, director of service learning and a Sister of Mercy, showcased the issue of immigration in a weeklong series of lectures, panels, and immigrant testimony on the difficulties their lives entail.

Bob Loudon, director of our criminal justice program and world-renowned law enforcement expert, gathered together members of the academic, political, and law enforcement communities to brainstorm about the problem of gangs and determine solutions. And Bert Okpokwasili, business professor, discussed the case of Dr. Dora Akunyili, head of the Nigerian equivalent of the FDA. She fought to save lives at the risk of her own by putting criminal makers and sellers of counterfeit prescription drugs out of business.

In the spiritual sense, light equals truth, and in time, with the concerted efforts of good men and women, the truth will lead to justice.

Justice is often our collective conscience in action. As Pope John Paul II said, “From now on it is only through a conscious choice and through a deliberate policy that humanity can survive.”

I thank you for your ongoing support and contributions to this Mercy institution, which strives every day to live out the Mercy values and opens doors of opportunity and justice for everyone we touch. May God shower you and your family with blessings.

A handwritten signature in blue ink that reads "Sister Rosemary".

Rosemary E. Jeffries, RSM, Ph.D., '72  
President, Georgian Court University

*At Georgian Court University, we believe that people are vital, and justice is nonnegotiable. The practice of justice, one of the Mercy core values, teaches students by example to go beyond the acquisition of knowledge and marketplace skills and ask the important questions: Why am I here? What is my purpose? Beyond what I learn and the practice of my profession, what is my place in the world?*

*Justice—choosing to be a catalyst for social change to ensure that all human beings are treated respectfully and equally—is one of GCU's Mercy core values. And we don't just give it lip service, we live it. So part of the answer to those questions is that it is our responsibility to help those who are suffering, to focus on doing what we can to bring justice to those who need it.*

*Seven GCU professors and staff did what they could to bring the plight of the suffering to those who can help them. These people, and those who take action due to their efforts, are the voices of those who have no voice and the hands that work for remedy.*

## THE CASE OF DARFUR

TOO YOUNG TO HAVE BEEN A PEACE ACTIVIST of the '60s, Scott Bennett, Ph.D., associate professor of history, nonetheless brings the fervor and intensity of those times to the 21<sup>st</sup> century. President of the Peace History Society, which encourages scholarly research on peace, nonviolence, and social justice, Dr. Bennett brought Vietnam veterans to campus for students to hear firsthand accounts of the war. He also took students to Vietnam to connect with the events described in their textbooks. Again, working in the service of peace, Dr. Bennett brought the issue of the genocide in Darfur to campus this past spring to raise our consciousness and encourage political action.

Dr. Bennett introduced to campus Joyce Apstel, Ph.D., director of Rights Work International, an international education project on genocide and human rights, and editor of *Darfur: Genocide Before Our Eyes*, to speak on the unspeakable. Since 2003, inhabitants of the Darfur region of Sudan have been the collateral damage in a war between rebel forces and the government of Sudan. Thousands of people have been displaced and are now

refugees without sufficient water or food. Beyond this are the strafing attacks of the Sudanese air force against the rebels in Darfur, which affect the refugees directly and keep much-needed aid from entering the region. But worst of all are the attacks of the rebels on the refugee camps, killing the men and raping and kidnapping the women.

“Social justice promotes humanity, peace, and national security,” says Dr. Bennett. “It promotes peace by addressing the social causes of war and violence. It promotes national security by reducing the resentments—both real and imagined—that increasingly make the United States a target.”

Dr. Bennett’s voice, coupled with that of other faculty members like sociology professor Kasturi Das Gupta, Ph.D., who moderates the student group S.T.A.N.D. (Students Taking Action Now: Darfur) will keep this issue before our eyes. Theirs are the voices that help us to take a stand against genocide in this latest theater of war crimes, and do whatever it takes to protect the vulnerable.



*“Social justice promotes humanity, peace, and national security,” says Dr. Bennett. “It promotes peace by addressing the social causes of war and violence...”*



## HUMAN TRAFFICKING

“SLAVERY WAS A PROBLEM OF THE 19<sup>TH</sup> CENTURY and earlier. It doesn’t exist today.” Unfortunately these statements are not true. A particularly devastating form of slavery still exists, and despite laws on the books of most of the world’s communities, it is prevalent. Each year, it is estimated that between 600,000 to 2.3 million people—mostly women and children—are trafficked internationally, nationally, and yes, locally in our own state of New Jersey, for sex.

“It is a horrific underground industry,” says Sandra Prucha, RSM, Ph.D., professor of psychology, who lectured on this topic in April. “And because it’s underground and hidden, you may not recognize its victims when you see them,” she continued.

Sister Sandy’s goal in speaking about this criminal enterprise was to increase people’s awareness of its existence and how it relates to immigration. She is one of the citizen voices who speaks for the victims.

Law enforcement in the United States is also working to inform the public and help the victims. The U.S. Department of Justice calls human trafficking a “brutal crime.” Mark Lagon, head of the State Department’s

anti-trafficking office says that human trafficking is “perhaps the most acute form of the disempowerment of women.”

An important paradigm shift has taken place in law enforcement’s perception of prostitution. It is not a victimless crime—and never has been. Pimps kidnap and rape the women, controlling them with threats and violence, drugs, and loss of freedom of movement.

Perhaps the most eloquent and impassioned call to action comes from our own U.S. Representative, Chris Smith, who wrote the Trafficking Victims Protection Reauthorization Act that was passed into law. “Make no mistake, this legislation is about protecting women....We must work to target the criminals—slaveholders—who force these young children and women into unimaginable horrors.”

We are just now beginning to fight the good fight, but there is much to be done. Hundreds of thousands, or perhaps even millions of women and children still need to be rescued. In the words of Chris Smith, “Let us all work together to make this the decade in which we abolish slavery from the face of the earth.”



*“It is a horrific underground industry,” says Sister Sandy. “And because it’s underground and hidden, you may not recognize its victims when you see them.”*



## THE CLOTHESLINE PROJECT

IF YOU HAPPENED TO WALK THROUGH THE LOBBY of the Arts and Science Center last April 19, you would have seen a row of colorful t-shirts hung on a makeshift clothesline like laundry hung out to dry on a windless day. But upon closer inspection, you'd see the handpainted message *"With a knife to my throat I was raped...[it] was bottled inside. It's time to break free,"* and know you'd come upon sacred ground.

One in six American women are victims of sexual assault. And an estimated two to four million women are battered each year. These are frightening and very personal statistics. Robin Solbach, Psy.D., director of counseling, brought the Clothesline Project to Georgian Court to help victims, and those who know victims, express their feelings.

"As a women's university, we are always concerned with women's issues," says Dr. Solbach. "This is, absolutely, a compassion issue and a justice issue," she continues.

The program's goal is to increase awareness of resources like the Counseling Center within GCU, and outside resources like the St. Francis Counseling Center that provide support for victims of violence.

"I wanted to bring the Clothesline Project to GCU because it is a way to give a voice to an issue that often doesn't get talked about. The purpose of the Clothesline Project is to increase awareness of the impact of violence against women, to celebrate women's strength, and to provide women a chance to break the silence that often surrounds their experiences," says Dr. Solbach.

Students, staff, and faculty alike were all drawn to the images and words painted on the t-shirts. Dr. Solbach adds, "The t-shirts conveyed such personal representations of the impact of violence on women's lives that several people became teary just reading them."

Empathy is the first step toward compassion.



*"As a women's university, we are always concerned with women's issues," says Dr. Solbach. "This is, absolutely, a compassion issue and a justice issue."*



## THE RWANDAN GENOCIDE—A Survivor Tells Her Tale

EVELYN QUINN SITS QUIETLY in the cavernous Casino building with about 100 first-year students, connected to a striking woman recounting a story too horrible to hear, her words of brutality and chaos in faraway Africa a decade ago in stark contrast to the warm November sunshine, fall foliage, and air of peace and possibility on the Georgian Court campus.

“We are members of a small global family,” says Evelyn Quinn, associate provost for academic support and student life programs, and codirector of Foundations of Excellence in the First College Year, a program that enhances the first-year experience. “And as family members, we need to care what happens to one another,” she continues. “This is what the Mercy core values are all about.”

The riveting speaker she brought to campus was Immaculée Ilibagiza, a survivor of the Rwandan holocaust. What better way to transform the impersonal headlines of a removed tragedy into an up-close and personal encounter.

“After reading *Left to Tell* (Ms. Ilibagiza’s firsthand account of

the Rwandan holocaust), I really appreciate how important life really is,” says freshman Elena Namocatcat.

That is because all but one other member of Ms. Ilibagiza’s family lost their lives in a few days in the crazed ethnically motivated killing spree. “You wake up one day, and they are all gone,” said Ms. Ilibagiza. Her mother, father, and two of her brothers were all murdered.

Ms. Ilibagiza takes her Christianity seriously. For 91 days, she and seven other women hid in a cramped bathroom while machete-wielding Hutus were killing people in the streets. She prayed the rosary, a gift from her father on the day he sent her to safety. She meditated on the life of Christ and recited Jesus’s words from the cross: “Father, forgive them, for they know not what they do.”

Living proof of the strength of faith and the power of forgiveness, Ms. Ilibagiza told her audience of GCU first-year students: “You can do anything...you are here for a good reason. God has you here for a good purpose. You can be the one to change the world.”



*“Immaculée is a phenomenon,” says Associate Provost Quinn. “She recounts the horror that occurred in her life, and she connects with the pain of it, and still she can go on and overcome the pain by advocating for forgiveness.”*



## THE IMMIGRATION EXPERIENCE

GEORGIAN COURT DOES NOT SHY AWAY from the controversial issues. One of the most polarizing today in the United States is that of immigration. A recent *New York Times*/CBS poll found that 91 percent believe that illegal immigration is either a very serious (61 percent) or somewhat serious (30 percent) issue.

One of the critical concerns of the Sisters of Mercy is “to stand in solidarity with immigrants.” They are committed to work for “systemic immigration reform that will provide a path to citizenship, preserve family unity, respect the dignity of each person, guarantee the rights of workers, and preserve the right to safe and decent living conditions for all.”

Last November, Georgian Court dedicated a weeklong conference to this thorny and pressing issue. “Immigration Experience Week was designed to be a forum to air all aspects of immigration,” says Catherine Darcy, RSM, director of service learning, who coordinated this event.

Topics ranged from contributions made by unauthorized immigrants to the economy of New Jersey, health concerns of immigrants, and Catholic social teaching on justice for immigrants. But the presentation titled, “Are We Still a

Melting Pot? Immigrants Tell Their Stories,” brought the discussion from the clinical to the personal.

At a table sat several men and one woman—experts from Mexico, the Dominican Republic, and El Salvador. They were reserved—almost shy—speaking exclusively in Spanish, telling their stories of hardship, of a quest for the American dream, and of a longing to help their families left behind.

“When you come to America, you realize that death is walking with you, and still you make the decision to come,” said Carolina Samodio through her interpreter. “The only strength you have every day is that you are doing this for your children,” she said with conviction. “And nothing, nothing is hard, and there is no obstacle, nothing matters... just getting that dollar to send it back.”

Another immigrant, who detailed his story with a photo of crosses—grave markers—at the Mexican border, summed up his own wishes and those of GCU conference organizers: “I wish that when you all walk out of this room, you can go out with a different mentality—not only about immigration, but about social justice. Are we going to allow more crosses at the border? The root of America is all men are created equal.”



*“Immigration Experience Week was designed to be a forum to air all aspects of immigration,” says Sister Cathy.*



## GANG VIOLENCE

ROBERT J. LOUDEN, PH.D., professor and director of criminal justice and a world-renowned expert in law enforcement, has spent his professional life protecting the public. Before he retired from the NYPD, he headed up the hostage negotiation task force, bringing his expertise and his compassion to save lives that were being threatened in real time.

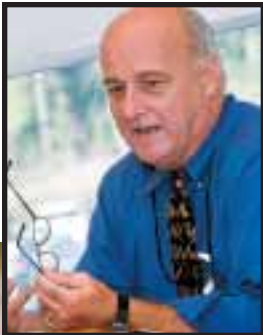
He is passing on both that expertise and compassion for victims to our students and is creating a world-class program in criminal justice at GCU. Keeping his students on the cutting edge of law enforcement, in April he hosted the 2007 conference and annual meeting of the New Jersey Association of Criminal Justice Educators, titled “Gangs of New Jersey.”

Participants looked at the subject of gang violence from legal, psychological, sociological, and criminal viewpoints. The event offered an inside look at gangs and their effect on New Jersey communities.

One hundred criminal justice educators, students, and community members, as well as officers and professionals from the New Jersey State Police, Lakewood Police, Toms River Police, New Jersey State Parole Board, New Jersey Juvenile Justice Commission, and the State Attorney General’s Office attended the event with the hope of suggesting realistic approaches to the problem.

“Gangs, by some definition, have been a reality since the beginning of recorded history,” says Dr. Loudon. “By looking forward and backward simultaneously, we may be able to learn how to make a difference.”

Dr. Loudon says that participants came away from the event with the knowledge that no community is immune to gangs, and they learned the importance of citizens and practitioners being observant and willing to participate in the process of identifying and weeding out gang activity to help keep the peace in our towns.



*“All New Jersey communities could be susceptible to gang-related violence, and many are already suffering from the effects,” says Dr. Loudon. He explains that the conference “demonstrated the need for enhanced collaboration between the academic and practitioner communities.”*



## COURAGE UNDER FIRE: Bringing Down Counterfeit Drug Dealers in Nigeria

IN NIGERIA, a society that is just now coming out of decades of one military regime being replaced by another, the effects of corruption are felt immediately and viscerally. Voted the most corrupt nation in the world in 2000, Nigeria has a serious and costly corruption problem. "In the short term, corruption may be beneficial to a handful," says Bertram Okpokwasili, D.Eng'g.Sc., assistant professor of business administration, "but in the long term, everybody suffers. It destroys the middle class, as in the case of Nigeria, and renders such basic institutions as education and health care ineffectual and objects of ridicule."

Dr. Okpokwasili grew up in Nigeria and as a young man went abroad to study and live, but he never broke ties with his native land. As an economist, he studies the Nigerian system and makes suggestions for change to harness the immense wealth-producing potential of its oil fields, to distribute it in a judicious way that will help the fledgling democracy.

Dr. Okpokwasili found an example in Nigeria of courage under fire and presented her case at the Faculty Research Forum. He saw this person as a perfect example of some-

one putting her life on the line to bring safety and justice to her people.

Dora Akunyili, Ph.D., took on the drug dealers in Nigeria. The drugs being dealt are fake prescription drugs used in Nigerian hospitals and prescribed by doctors. These knockoff drugs are dangerous both for what they contain and for what they don't contain. Sometimes they kill because of poisonous components in them. Other times they kill because people think they are getting the drug they need, when they are not, and their untreated disease unnecessarily becomes fatal.

As director of Nigeria's National Agency for Food and Drug Administration, Dr. Akunyili had the authority to wage all-out war against the drug dealers. And she used it.

"My coming here [to government service] and not doing the work is greater than any sin in the Ten Commandments,"

Dr. Akunyili said after a sniper attack on her life. "I just leave it to God and put in the effort that is humanly possible. I refuse to be intimidated."



*"Corruption hurts everybody," says Dr. Okpokwasili. "Dr. Akunyili is an important example of someone willing to do something about it, even at great cost. She is doing nothing short of saving lives."*



## GCU SOCIAL WORK PROGRAM

AS STUDENTS PASS THROUGH GEORGIAN COURT UNIVERSITY, they are encouraged to be mindful of how their actions and personal values will impact the most vulnerable members of our community. Putting care and concern into action is at the heart of the GCU social work program. Robin Aniboli '05 represents one of many GCU-trained social workers who are on the front lines every day, striving to ensure the welfare of people in need.

Ms. Aniboli saw social justice in action early. Her parents took in foster children, and, in the summertime, offered their home as a summer getaway as part of the Fresh Air Fund. After raising her own children, Ms. Aniboli was looking for something more and was drawn to Georgian Court's tradition of fostering social justice. "I entered parenthood early, and I had the mistaken notion that I could be employed or educated, but not both. Georgian Court showed me I could do both."

The social work professors at GCU inspired Ms. Aniboli to perform the crucial work she does today, ensuring that the needy in Ocean County have access to professional

medical, behavioral, and dental services. "In order to be an effective social worker, a willingness to be open-minded and nonjudgmental is imperative. I gained the ability to do that from my professors at GCU."

Ms. Aniboli also credits the GCU social work program with encouraging her to spread her wings as a person and as a social worker. When she was presented with an opportunity to fulfill her social work service requirements in the OB/GYN area of Ocean Health Initiatives (OHI), she wasn't sure it was for her. "I went into the internship kicking and screaming because I had planned to work with geriatric clients," Ms. Aniboli explains. "Luckily, my professors at GCU would have none of that. They insisted I broaden my horizons, and it turned out that I loved working with clients from a variety of populations. I love the diversity of my patients. I've employed three GCU student interns so far, and I welcome more! I know they're getting a quality education and gaining a true understanding of what social work means."



*"The social work program has taught me so much about different cultures and religions. My eyes have been opened to a whole new world, particularly the plight of the needy. I am now determined to open the eyes of all those who do not see this. One of my favorite things about GCU is realizing that there are other people who also want to stand up for the rights of others...people who put others before themselves."*

Lacie Tyger, Senior, Social Work Major

***"Everyday, I wake up knowing that I will make a difference in the life of at least one person."***

Robin Aniboli '05, Social Worker  
GCU Alumna



## BOARD OF TRUSTEES & PRESIDENT'S CABINET

### BOARD OF TRUSTEES

*Patricia E. Koch, Esq., '69, Chair*

*Raymond F. Shea Jr., Esq., Vice Chair*

*Brian Buckelew, Immediate Past Chair*

*Edmund Bennett Jr.*

*Michele Tryon Cimiluca '73*

*John F. Croddick Sr.*

*Margaret E. Crowley, RSM, Ph.D.*

*Allison DePalma*

*Marie Michele Donnelly, RSM*

*John Paul Doyle, Esq.*

*Helen Donovan Feulner, Ed.D.*

*Elisabeth Fontenelli*

*Amy Joseph Habib '60*

*James J. Knipper*

*Joseph P. Knipper*

*Lesa Lardieri-Wright '75*

*Eugenia E. Wilson Lawson '84, '96*

*John K. Lloyd*

*Eileen Lowden, RSM, '72, '82*

*Mary J. Meehan, Ph.D.*

*Mary Louise Miller, RSM, Esq.*

*Kathleen Croddick Molyneaux '95*

*Deirdre Mullan, RSM*

*Elizabeth Healey Mulvihill '66*

*Rev. Joseph Novak, SJ*

*Frederick E. Nydegger*

*Carol Rittner, RSM, D.Ed.*

*Hon. Robert W. Singer*

### TRUSTEES EMERITI

*Laurence M. Downes*

*Percylee Hart, RSM, '67*

### PRESIDENT'S PLANNING & ADMINISTRATIVE TEAM

*Rosemary E. Jeffries, RSM, Ph.D.,  
'72, President*

*Ruth Ann Burns  
Vice President for Marketing  
and External Affairs*

*Anne Marie Diehl  
Vice President for Enrollment*

*Mary Ellen Fuhrman, RSM  
Special Assistant to the  
President for Mission and  
Planning*

*Barbara Gliwa  
Vice President for Finance  
and Administration*

*Joseph Gower, Ph.D.  
Provost*

*Margaret Huber, Ph.D.  
Vice President for  
Institutional Advancement*

*Robert Pescinski  
Chief Information Officer*

*"To no one will we sell, to no one will we  
refuse or delay right or justice."*

MAGNA CARTA

## YEAR-END HIGHLIGHTS, FINANCIAL STATEMENTS & HONOR ROLL OF DONORS

Year-End Highlights	14
Financial Statement of Activities	16
The Campaign for Georgian Court	18
Honor Roll of Donors	19
Trustee Giving	19
Planned Giving	19
Founders' Society	20
Circle of Mercy	20
Silver Society	20
Great Oak Society	20
Casino Society	20
Apollo Society	21
McAuley Society	21
Kingscote Society	22
Century Society	23
Honor Society	24
Class Giving	33
Special Listings	34
Office of Institutional Advancement	36

*From developing three new majors and a graduate strand in autistic studies, to breaking ground for the new Wellness Center, Georgian Court University is on the move in New Jersey.*

- Surpassed original campaign goal of \$10 million by \$2.2 million
- Elected a new alumni board and focused on building alumni chapters using the New York City chapter as a model
- Started a Charitable Gift Annuity Program
- Developed a Planned Giving Advisory Council
- Integrated the Grants Development Team and grants process and experienced successes that include funding from the Sunfield Foundation, Investors Savings Bank, Johnson & Johnson, Florian J. Lombardi Foundation, Ocean County Freeholders, Barnegat Bay National Estuary Program, and the Charlotte W. Newcombe Foundation
- Held successful events including the Gala, Golf Classic, Scholarship Tea, and Reunion Weekend
- Enrolled the largest freshman class in more than 30 years
- Implemented Red Carpet Days for new transfer applicants for one-stop application, acceptance, advisement, and registration
- Developed procedures for the University Honors Program
- Launched high school sophomore and junior student search and fulfillment initiative in conjunction with Royall and Co.
- Integrated Noel-Levitz Forecast Plus scoring with Recruitment Plus to enhance and personalize communication with prospective students
- Developed an enrollment revenue management system for financial aid awards in conjunction with Noel-Levitz
- Automated the Admissions and Registrar data feed to PowerFails to begin auto-packaging of financial aid to students
- Increased frequency and effectiveness of graduate admissions program promotion and communications using Fire Engine Red and GCU e-mail
- Achieved excellent bond ratings in *Standard & Poor's* and *Moody's* reviews
- Completed a successful \$26 million refunding and new money bond sale resulting in savings of over one million dollars to the university
- Won appeal for approval of a new entrance and Wellness Center project
- Selected new firms for facilities management and the University Bookstore
- Construction of Wellness Center on schedule and on budget
- Made the transition to SunGard Managed Services for information technology support
- Designed and built a new data center with industry standard power protection and security
- Completely upgraded the campus data network including new switching and routing hardware, cable plant improvements, and configuration to industry standards
- Updated all systems (PowerCampus, PowerFAIDS, MS Dynamics GP) to latest releases
- Implemented Shift 4 for online student payments
- Automated processes in the Office of Financial Aid for aid packaging, determining satisfactory academic progress, and award rollover



## YEAR-END HIGHLIGHTS OF 2006-07

- Installed over 190 new personal computers throughout the campus
- Upgraded computer labs in the Arts and Science Center, Raymond Hall, and the library
- Designed and installed new standardized audio/visual classroom equipment in the Farley Center
- Designed and installed new audio/video systems in the North Dining Room
- Increased faculty training opportunities in a variety of topics and through different teaching modalities
- Signed comprehensive dual admissions agreement for undergraduate programs with Brookdale Community College
- Gained internal and external approvals for three new degree programs (B.A. in Dance; B.S. in Exercise Science, Wellness, and Sports; B.S. in Tourism, Hospitality, and Recreation Management)
- Faculty members developed and approved all courses needed for the new general education program
- Started M.B.A. and M.A. in Administration and Leadership programs at Cumberland County College
- Faculty members developed suite of Autism Spectrum Disorder graduate courses in the School of Education
- Signed partnership agreements with Lakehurst Naval Engineering Station and Zhejiang University City College
- Launched University College
- Started two new initiatives to deliver GCU courses to high school students: Step Ahead and Course Ahead Plus
- Began our first offering of undergraduate business courses at a corporate site: J. Knipper and Company
- A new vision statement was created and five goals were collaboratively developed by the campus community. Strategic directions were established and the strategic planning process launched.
- Gained approval from the Middle States Association Commission on Higher Education for the Decennial Self-Study Design for Reaccreditation
- Received more than \$524,000 in editorial column inches of print through more than 120 news releases on GCU people, programs, and events
- Created a record number of 105 publications, which garnered 18 regional, state, national, international awards ranging from the video, radio and print ads, magazine, and annual report to enrollment materials and the Web site
- Hosted more than 23,150 guests for educational, spiritual, and cultural events. The Mercy core values were strongly reflected in programs that raised awareness from topics as diverse as immigration, autism, peace in Darfur, New Jersey gangs, and human trafficking.
- Successfully implemented a new content management system for the Georgian Court Web site, and dramatically increased off-campus visitors from 1,035,070 visits in 2003 to 2,326,408 in 2006
- Launched Government Affairs Committee and communication initiatives at the local, county, state, and federal levels
- Developed 18-month Centennial Plan for the university that includes broad representation across all divisions
- Worked with the university historian to create a pictorial history of Georgian Court University for Arcadia Books' Campus History Series



# GEORGIAN COURT UNIVERSITY STATEMENT OF ACTIVITIES

For the Year Ended June 30, 2007

	Unrestricted	Temporarily Restricted	Permanently Restricted	Total
<b>Operating Revenues</b>				
<b>Revenues and other support:</b>				
Student tuition and fees, net of scholarship expense of \$7,228,858	\$35,612,194	\$ –	\$ –	\$35,612,194
Government grants and contracts	1,819,164	–	–	1,819,164
Contributions and private grants	2,487,745	1,247,309	107,602	3,842,656
Special events revenue	580,595	–	–	580,595
Less: direct expenses	(506,556)	–	–	(506,556)
	74,039	–	–	74,039
Auxiliary enterprises revenues	2,988,921	–	–	2,988,921
Other revenues	450,648	–	–	450,648
Net assets released from restrictions	1,385,946	(1,385,946)	–	–
<b>Total revenues and other support and net assets released from restrictions</b>	<b>44,818,657</b>	<b>(138,637)</b>	<b>107,602</b>	<b>44,787,622</b>
<b>Operating expenses</b>				
Instruction	12,712,156	–	–	12,712,156
Academic support	10,276,522	–	–	10,276,522
Student services	6,533,529	–	–	6,533,529
Institutional support	10,003,185	–	–	10,003,185
Auxiliary enterprises	2,971,063	–	–	2,971,063
<b>Total operating expenses</b>	<b>42,496,455</b>	<b>–</b>	<b>–</b>	<b>42,496,455</b>
Increase (decrease) in net assets from operating activities	2,322,202	(138,637)	107,602	2,291,167
<b>Nonoperating activities</b>				
Interest and dividend income	2,160,669	230,911	–	2,391,580
Unrealized and realized appreciation (depreciation) in fair value of investments	3,655,252	425,597	57,051	4,137,900
Gain on sale of property	–	–	–	–
Cumulative effect of change in accounting principle	–	–	–	–
Other changes	14,869	–	–	14,869
Increase (decrease) in net assets from nonoperating activities	5,830,790	656,508	57,051	6,544,349
Changes in net assets	8,152,992	517,871	164,653	8,835,516
<b>Net assets, beginning of year</b>	<b>61,116,008</b>	<b>3,529,148</b>	<b>4,387,768</b>	<b>69,032,924</b>
<b>Net assets, end of year</b>	<b>\$69,269,000</b>	<b>\$4,047,020</b>	<b>\$4,552,421</b>	<b>\$77,868,440</b>

**Fiscal Notes**

Georgian Court University ended the fiscal year with a balanced budget and a surplus from operations of \$2.3 million, largely due to the gift of \$2 million received from an alumna.

Total assets increased approximately \$8.7 million, primarily due to increases in land, buildings, and equipment and in long-term investments.

Georgian Court has grown its financial reserves over the last few years, and with the recent fundraising efforts of the comprehensive campaign and solid investment performance, long-term investments increased by 7.6%. The university broadened its portfolio to include a socially responsible investment fund and also began its first year of a planned giving program offering charitable gift annuities.

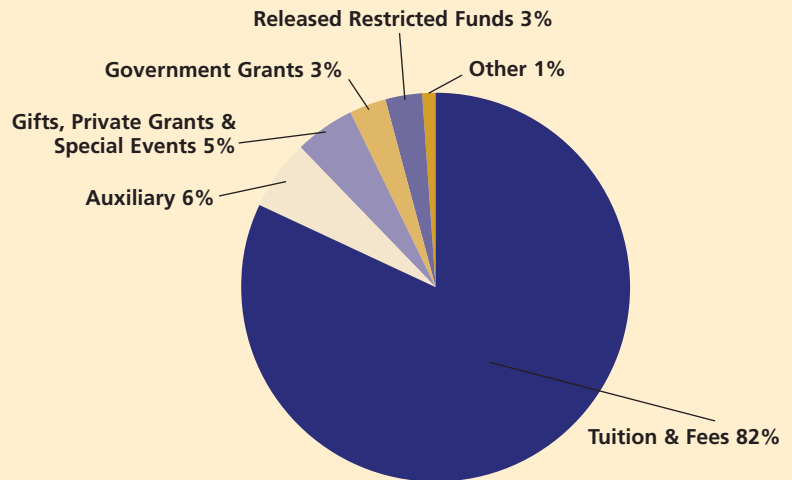
Operating and nonoperating revenue increased by a total of \$4.4 million, while operating expenses increased by \$2.5 million. The increase in expenditures was across the functional units of the university: academic support increased by 14.2%, institutional support by 6.3%, auxiliary enterprises by 10%, student services by 3.9%, and instructional by 0.6%.

The university completed the design of a new entrance off Ninth Street as well as the design of a \$26-million Wellness Center and Complex consisting of athletic fields, tennis courts, and a silver-rated LEED certified Wellness Center. The 66,000-square-foot center will house the bookstore, an arena, dance studios, athletic offices, and a fitness center. The university broke ground in Spring 2007 with occupancy scheduled for June 2008.

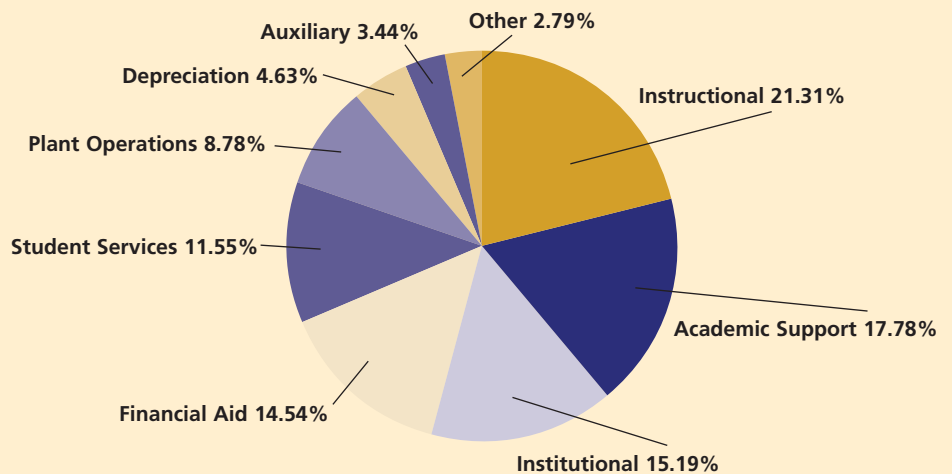
The university made a considerable investment in its technology infrastructure through the construction of a data center and the purchase of new servers and fiber upgrades. A computer recycling plan was implemented, and the laptop program for the Women’s College continues for its third year.

Improvements to the physical plant included much-needed repairs to the Mansion, Mercedes Hall, and Raymond Hall East as well as ADA modifications across campus.

**Unrestricted Revenue 2007**



**Operating Expenditures 2007**



*THE CAMPAIGN for Georgian Court is one of the most ambitious fundraising initiatives in the university's history.*

*With an initial goal of \$10 million, the university celebrated the public launch of the campaign in April 2006 after securing \$7.9 million in support. Six months later, the university announced an increase in the campaign's goal after reaching \$10 million in gifts and pledges. The campaign is scheduled for completion in 2008 with a stretch goal of \$15 million. The response of the university's alumni, friends, and supporters has exceeded expectations, and we are confident that we will meet this new goal with continued support.*

*As we publish this report, \$12.2 million has been raised in support of the campaign's fundraising goals. This comprehensive campaign supports initiatives for student access in the form of endowed scholarships; university excellence through faculty development; an enhanced annual giving program to provide long-term support for the university's operational needs; and enrichment of the Women's College experience through the construction of the Wellness Center.*

*Special thanks to our campaign supporters. The following donors have supported the campaign with cumulative gifts or pledges of \$5,000 or greater.*

## LEADERSHIP GIFTS

### \$1,000,000 or Greater

Dorothy Jamin Marron '36 †

### \$500,000 – \$999,999

Ed Bennett Properties Inc.  
Sisters of Mercy of the Americas, Regional Community of New Jersey  
Eleanor M. Weisbrod '44

### \$250,000 – \$499,999

Sarah Flaherty Kenny †  
Lorraine Doyle Machuta '41  
OceanFirst Foundation  
Fred B. Snite Foundation

### \$100,000 – \$249,999

Olive W. Bray '35 †  
Michele Tryon Cimiluca '73  
John F. and Virginia Croddick Sr.  
Eugene T. Daisey †  
Elisabeth Fontenelli  
William A. Gallagher, Esq. †  
William Randolph Hearst Foundation  
Miriam Welsh Hollfelder '32 †  
J. Knipper and Company Inc.  
The Charles A. Mastronardi Charitable Foundation  
Raymond F. Shea Jr., Esq.  
Anna M. Sloyan †  
Diocese of Trenton

## MAJOR GIFTS

### \$50,000 – \$99,999

Virginia Barrett Agans '69  
Brian Buckelew  
Joseph Buckelew  
Robert and Patricia McFadden Dombal '63  
Amy Joseph Habib '60  
The Hirair & Anna Hovnanian Foundation Inc.  
The Huisking Foundation  
Douglas C. King Fund  
Florian J. Lombardi Foundation Inc.  
Gertrude Turner Mahon '35  
Laura Moran '53 †  
Mae Schimenti Schiraldi '44  
Jacquelyn Marie Smith †  
The Sunfield Foundation  
Todino Family Foundation  
Suzanne Sharkey Valla, Esq., '66

## SPECIAL GIFTS

### \$25,000 – \$49,999

Joyce Armstrong Carroll, Ed.D., H.L.D., '59  
Commerce Bank, N.A.  
Paul DeLaurentis Trust  
Peter F. DeLaurentis Trust  
Laurence M. Downes  
Leonard S. Fiore Inc.  
Johnson & Johnson Family of Companies  
Patricia Keys  
Patricia E. Koch, Esq., '69  
Lesa Lardieri-Wright '75  
Carol Mastronardi Mastoloni '56  
McGonigle Family Foundation  
Kathleen Mary Croddick Molyneaux '95  
Charlotte W. Newcombe Foundation  
New Jersey Resources Corporation  
Frederick E. Nydegger  
Whelan Foundation

### \$10,000 – \$24,999

Bohlin Cywinski Jackson Architecture Planning Interior Design  
Helen Hanna Casey '71 and Annie Hanna Cestra '73  
The Citta Foundation  
Community Counselling Service Company, L.L.C.  
Component Hardware Group Inc.  
Anne E. Davis-Smith †  
Benicio Del Toro  
John Paul Doyle, Esq.  
Helen Donovan Feulner, Ed.D.  
FirstEnergy Foundation  
Freehold Music Center  
Ellen Mullane Gallagher '64  
Gallagher Foundation  
General Electric Foundation  
Goldman Sachs  
William B. Hanrahan  
Margaret A. Huber and Thomas J. Schuchert  
Hunter Roberts Construction Group  
IBM Corporation  
Laurita Vineyards & Winery, L.L.C.  
Eugenia Elizabeth Wilson Lawson '84, '96  
John K. Lloyd  
Marie S. Marquet  
Frank Mastoloni & Sons Inc.  
Mercy Action Inc.  
Elizabeth Healey Mulvihill '66  
John V. Palermo Jr.  
Pfizer Inc.  
Helen Pitonyak  
A. Claire Glanfield Sansone '62

† deceased

## HONOR ROLL OF DONORS

SEI Investments

Honorable Robert W. Singer

United States Court Tennis Preservation  
Foundation

United States Environmental Protection Agency

Charlotte G. Van Hise †

Verizon Communications, Toms River

Wyeth Consumer Healthcare

### SUSTAINING GIFTS

#### \$5,000 – \$9,999

Elliott and Juana Antokoletz

Aramark Service Master Facility Services

Barnegat Bay National Estuary Program

Barr Laboratories Inc.

Bradfort T. Blauvelt Trust

The Bocina Family Foundation Inc.

Felix and Maria Canabal

Conover Beyer Associates

Rose Evans

Genoveva Felisgrau

Gannett Foundation Inc.

A. Findlay Geddes and Mildred K. Geddes  
Charitable Foundation Inc.

Michael Gross, Ph.D.

Hatteras Press Inc.

Independent College Fund of New Jersey

Paul O. Koether

Gloria Theresa Landolfi '73

Lynchburg Steel Company, L.L.C.

McElroy, Deutsch, Mulvaney & Carpenter

Pamela Buckley McInnis '66

Caroline McKinnon '60

Meridian Health System

Ocean County College

Ocean County Women's Association

Marina O'Donnell, RSM, '44

Eduardo S. and Hermosa Paderón

Delores L. Parron-Ragland, Ph.D., '66

Ann Passadin

Pine Belt Auto Group

Aubrey Sarvis

Schoor DePalma Inc.

SunGard Higher Education

Corinne Ravizza Tillotta '63

Kathleen Scanlin Tschaen '66

Wachovia Bank Charitable Services Group

Bette Jean Pickett Wintrich '49

### TRUSTEE GIVING

Edmund Bennett Jr.

Brian Buckelew

Michele Tryon Cimiluca '73

John F. Croddick Sr.

Margaret E. Crowley, RSM, Ph.D.

Allison DePalma

Marie Michele Donnelly, RSM

John Paul Doyle, Esq.

Helen Donovan Feulner, Ed.D

Elisabeth Fontenelli

Amy Joseph Habib '60

Rosemary E. Jeffries, RSM, Ph.D., '72

James J. Knipper

Joseph P. Knipper

Patricia E. Koch, Esq., '69

Lesia Lardieri-Wright '75

John K. Lloyd

Eileen Lowden, RSM, '72, '82

Mary J. Meehan, Ph.D.

Mary Louise Miller, RSM, Esq.

Kathleen Croddick Molyneaux '95

Elizabeth Healey Mulvihill '66

Rev. Joseph Novak, SJ

Frederick E. Nydegger

Carol Rittner, RSM, D.Ed.

Raymond F. Shea Jr., Esq.

Hon. Robert W. Singer

Laurence M. Downes, Emeritus

Percylee Hart, RSM, '67, Emerita

### PLANNED GIVING



#### LOFTY PINES SOCIETY

*Individuals who have made provisions for  
Georgian Court University in their estate plans*

Randie Spencer Blauth '66

Justyna Mary Steuer Carlson '66

Mary E. Cranwell '82, '97

Palma Trilli Giordano '55

Mary Bowman Halpin '66

Donnamarie Irwin '67

Cynthia Lisowski '83, '95, '06

Eileen Lynch '73

Gertrude Turner Mahon '35

Eleanor Wyrrough Matthiesen '40

Pamela Buckley McInnis '66

Jeri Miele '84

Mary Ann Fluehr Murphy '47

Michelle C. Nice '69

Lillian Olup

Angela Ricciardelli '56

Mary Catherine Duggan Siegel, J.D., '69

Eileen Leyshon Warman '52

Celia Davis Younger '02

Nancy Ladd Zachem '79

Donna Marie Ziemba '73

#### Charitable Gift Annuities, Trusts, and Bequests

Paul DeLaurentis Trust

Peter F. DeLaurentis Trust

Bernard S. Derow

William A. Gallagher, Esq. †

M. Gail Judge Charitable Trust

Richard Frederick Petty '87 †

Ersula Zalenski

# HONOR ROLL OF DONORS

## FOUNDERS' SOCIETY

*The Founders' Society is a group of distinguished supporters of Georgian Court University. Members include individuals and organizations whose gifts for the university in any fiscal year exceed \$25,000.*

George I. Alden Trust  
Anonymous  
AT&T Foundation  
Edmund Bennett Jr.  
Ed Bennett Properties Inc.  
Madeline B. Bisson '23 †  
Olive Welsh Bray '35  
The Bristol-Meyers Squibb Foundation Inc.  
Brian Buckelew  
Jean A. Burke '47  
Karen Coffey



Robert J. Comiskey  
Commerce Bank, N.A.  
Component Hardware Group Inc.  
The Connelly Foundation  
John F. and Virginia Croddick Sr.  
Eugene T. Daisey  
Margaret Dalton, RSM, '47 †  
Anne E. Davis-Smith †  
Paul DeLaurentis Trust  
Peter F. DeLaurentis Trust  
Mary Loretto Snite Dillon '37 †  
Geraldine R. Dodge Foundation  
Laurence M. Downes  
The Max and Victoria Dreyfus Foundation  
Leonard S. Fiore Inc.  
Elisabeth Fontenelli  
Ellen Mullane Gallagher '64  
William A. Gallagher, Esq. †  
Audrey A. Birish George '61 †  
William Randolph Hearst Foundation  
Miriam Welsh Hollfelder '32 †  
The Hirair & Anna Hovnanian Foundation Inc.  
The Huisking Foundation  
Independent College Fund of New Jersey

Johnson & Johnson Family of Companies  
Sarah Flaherty Kenny †  
Douglas C. King †  
James J. Knipper  
Joseph P. Knipper  
J. Knipper and Company Inc.  
Blanche Lombardi  
Florian J. Lombardi Foundation Inc.  
Lorraine Doyle Machuta '41  
Robert J. Machuta  
Gertrude Turner Mahon '35  
Dorothy Jamin Marron '36  
Carol Mastronardi Mastoloni '56  
The Charles A. Mastronardi Charitable Foundation  
Charles J. and Lillian Darragh McCarthy '45  
Joanne Sheehan McDonnell '51 †  
J. Oliver McGonigle  
McGonigle Family Foundation  
Laura Moran '53 †  
Mary Ann Fluehr Murphy '47  
New Jersey Historic Trust  
OceanFirst Foundation  
Honorable and Mrs. Robert A. Ruggiero  
Domenick M. Servodio  
Raymond F. Shea Jr., Esq.  
Sisters of Mercy of the Americas, Regional Community of New Jersey  
Alfred P. Sloan Foundation  
Anna M. Sloyan †  
Jacquelyn Marie Smith †  
Mary Anne Huisking Smith  
Fred B. Snite Foundation  
Sony USA Foundation Inc.  
Dr. Ralph Spohn  
State of New Jersey, Department of Education  
State of New Jersey, General State Fund  
Kathleen Huisking Sullivan  
The Sunfield Foundation  
Nicholas Meredith Turner  
United States Department of Education  
United States Department of Justice  
Monica Sobieski Urban '74  
Anna O'Connor Ward '26 †  
Eleanor M. Weisbrod '44  
Margaret Whelan '81  
Whelan Foundation

## CIRCLE OF MERCY

**\$1,000,000 and above**

Dorothy Jamin Marron '36 †

## SILVER SOCIETY

**\$100,000 – \$249,999**

William A. Gallagher, Esq. †  
OceanFirst Foundation  
Fred B. Snite Foundation

## GREAT OAK SOCIETY

**\$10,000 – \$99,999**

Virginia Barrett Agans '69  
Edmund Bennett Jr.  
Ed Bennett Properties Inc.  
Bohlin Cywinski Jackson Architecture Planning Interior Design  
Brian Buckelew  
Joseph Buckelew  
Helen Hanna Casey '71  
Community Counselling Service Co., L.L.C.  
Annie Hanna Cestra '73  
Karen Coffey  
Commerce Bank, N.A.  
Component Hardware Group Inc.  
John F. and Virginia Croddick Sr.  
Paul DeLaurentis Trust  
Peter F. DeLaurentis Trust  
Patricia McFadden Dombal '63  
Laurence M. Downes  
Leonard S. Fiore  
Michael A. Fiore  
L.S. Fiore Inc.  
FirstEnergy Foundation  
Elisabeth Fontenelli  
Freehold Music Center  
Ellen Mullane Gallagher '64  
Gallagher Foundation  
General Electric Foundation  
Goldman Sachs  
Amy Joseph Habib '60  
Mr. & Mrs. Hirair Hovnanian  
The Hirair & Anna Hovnanian Foundation Inc.  
The Huisking Foundation  
Hunter Roberts Construction Group  
Johnson & Johnson Family of Companies  
James J. Knipper  
Joseph P. Knipper  
J. Knipper and Company Inc.  
Patricia E. Koch, Esq., '69  
Lesia Lardieri-Wright '75  
Laurita Vineyards & Winery, L.L.C.  
John K. Lloyd  
Blanche Lombardi  
Florian J. Lombardi Foundation Inc.

Gertrude Turner Mahon '35  
Marie S. Marquet  
Carol Mastronardi Mastoloni '56  
Frank Mastoloni & Sons Inc.  
The Charles A. Mastronardi Charitable Foundation  
Mercy Action Inc.  
Kathleen Mary Croddick Molyneaux '95  
New Jersey Historic Trust  
New Jersey Resources Corporation  
Frederick E. Nydegger  
Prudential Preferred Realty  
SEI Investments  
Domenick M. Servodio  
Raymond F. Shea, Esq.  
Mary Anne Huisking Smith  
Kathleen Huisking Sullivan  
The Sunfield Foundation  
Rosemary McElroy Todino '56  
Todino Family Foundation  
Diocese of Trenton, Pastoral Center  
United States Court Tennis Preservation Foundation  
United States Department of Justice  
Suzanne Sharkey Valla, Esq., '66  
Eleanor M. Weisbrod '44  
Margaret Whelan '81  
Whelan Foundation

## CASINO SOCIETY

**\$5,000 – \$9,999**

Elliott and Juana Antokoletz  
Aramark Service Master Facility Services  
Barr Laboratories Inc.  
Jeannette Elizabeth Henig Beyer '95  
Warren Beyer  
Phyllis Despirito Bocina '51  
The Bocina Family Foundation Inc.  
Felix and Maria Canabal  
The Citta Foundation  
Conover Beyer Associates  
Allison DePalma  
Genoveva Felisgrau  
A. Findlay Geddes and Mildred K. Geddes Charitable Foundation Inc.  
William B. Hanrahan  
Hatteras Press Inc.  
Independent College Fund of New Jersey  
Paul O. Koether  
Gloria Theresa Landolfi '73  
Dr. Jon Larson  
Lynchburg Steel Company, L.L.C.

McElroy, Deutsch, Mulvaney & Carpenter  
 Sisters of Mercy of the Americas, Regional Community of New Jersey  
 Meridian Health System  
 O'Brien Family Foundation Inc.  
 Ocean County College  
 Ocean County Women's Association  
 Marina O'Donnell, RSM, '44  
 Pfizer Inc.  
 Pine Belt Auto Group  
 Caryl Russo  
 Mr. & Mrs. Paul Saake  
 Mae Schimenti Schiraldi '44  
 Schoor DePalma Inc.  
 Honorable Robert W. Singer  
 SunGard Higher Education  
 Corinne Ravizza Tillotta '63  
 Verizon Communications  
 Wachovia Bank Charitable Services Group

#### **APOLLO SOCIETY**

**\$1,000 – \$4,999**

ACAI Solutions, L.L.C.  
 Almasi Contractors, L.L.C.  
 American Chemical Society, Ocean County Section  
 John A. Amirante, C.F.P.  
 Area VII Physicians Review Organization Inc.  
 Asbury Park Press Inc.  
 AT&T Foundation  
 Renee Katz Barry '75  
 BD  
 Ann Allman Beighley '69  
 Mary C. Bilderback, RSM  
 Bil-Jim Construction Company Inc.  
 Bernadette Barry Bond '56  
 Brookdale Community College  
 Ellen M. Brown '69  
 Sharon Bucs Burke '62  
 Patricia Burns, F.N.D.S.C., '62, '06  
 Ruth Ann and Carl Burns  
 Betty Jean Buck Byrnes '51  
 Carluccio, Leone, Dimon, Doyle & Sacks  
 Joan Farley Carroll '51  
 Margaret E. Casey '73  
 Kim Weigand Casola '83  
 Chartwells  
 Gloria Backes Christiansen '56  
 Michele Tryon Cimiluca '73  
 CJM-LDM Charitable Fund  
 Community Foundation of Western Massachusetts

College Book Stores of America  
 Rose Marie Bellocchio Correia '59  
 Maria Costa '59  
 Croddick Real Estate Holding, L.L.C.  
 Frances Kraljic Curran, Ph.D., '67  
 Angela D'Aversa, Ph.D., '67  
 D'Elia Funeral Home  
 Dell Computer Corporation  
 Bernard S. Derow  
 Jane M. Derrig, M.D., '83  
 Anne Marie Diehl  
 John Paul Doyle, Esq.  
 Dr. Patricia O'Connor Dreyfuss '74  
 Irma Eccles  
 ExxonMobil Foundation  
 Carolyn Ferolito  
 Cathy Barnwell Ferrier '92, '97  
 Helen Donovan Feulner, Ed.D.  
 GCU Alpha Sigma Lambda  
 GCU Middlesex Alumni Chapter  
 Barbara A. and Paul Joseph Gliwa  
 D. Gordon Controls Inc.  
 Michael Gross, Ph.D.  
 H2L2  
 Marjorie Murphy Hale '68  
 John R. Halleran, Esq.  
 Mr. & Mrs. Harry E. Hansen  
 Ella Anne P. Phillips Harbeck '56  
 Barbara Ann Cleary Harris '54  
 Carol Harris '00  
 Joyce Goletz Heckman '83  
 Holy Cow Ranch  
 Carolyn J. Hordichuk  
 Margaret A. Huber and Thomas Schuchert  
 IBM Corporation  
 Integrity Consulting Group Inc.  
 Investors Savings Bank  
 Rosemary E. Jeffries, RSM, Ph.D., '72  
 Candida Frenking Jens '57  
 Jersey Central Power & Light  
 Keefe, Bruyette & Woods  
 Kristin W. Keeling  
 Linda Kelly  
 Kimball Medical Center  
 Mykhaylo S. Kulynych  
 Martha Collins Leeds '78  
 Lester Glenn Auto Group  
 George Link Jr. Charitable Trust  
 Cynthia Lisowski '83, '95, '06  
 Jeff Machi  
 Rita Molinari Malloy '69  
 Evelyn Solmo Marano '69  
 Jean Marshall

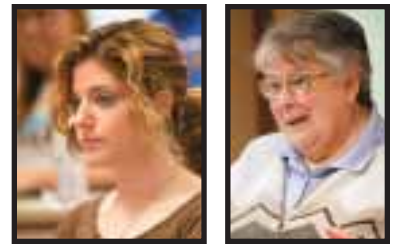
Lillian Darragh McCarthy '45  
 Pamela Buckley McInnis '66  
 Caroline McKinnon '60  
 Amelia Alonso McTamanev '67  
 David Merkel  
 Yanci Pereira Merkel '04, '06  
 Kathleen Marie McGowan Metz '62  
 Metz Family Enterprises, L.L.C.  
 Mary Louise Miller, RSM, Esq.  
 Beverly Ann Milyo '69, '83  
 Elizabeth Healey Mulvihill '66  
 Mary Ann Fluehr Murphy '47  
 Regina Waldron Murray '40  
 New Jersey Association of Public Accountants  
 William and Lynn F. O'Brien  
 OceanFirst Bank  
 Organon Inc.  
 Dr. and Mrs. Eduardo and Hermosa Paderón  
 John V. Palermo Jr.  
 Delores L. Parron-Ragland, Ph.D., '66  
 Lauren A. Mooney Pavlovich '66  
 Jane Ahmuty Perry '69  
 Pershing  
 Kathleen Collins Petruska '69  
 Richard Frederick Petty '87 †  
 Helen Pitonyak  
 Priority Air Express  
 Carol A. Quinn Reilly '58  
 Dennis Richardson  
 Leandro P. Rizzuto  
 Suzie Rizzuto and Morris Flancbaum  
 RJS Industries Inc.  
 Peggy T. O'Connell Roddy '56  
 Sallie Mae Fund  
 Sallie Mae, Office of Community Relations  
 Douglas E. Salvati  
 Elizabeth Mary Savner '76  
 Dr. Carol Nast Scelza  
 Arlene Schicker '59  
 Cheryl Ruszcyk Schmid '76  
 Serluco & Company, L.L.C.  
 Dr. Siamack Shojai  
 Senator Robert W. Singer Election Fund  
 Sisters of Mercy of the Americas, Mid-Atlantic Community Inc.  
 Sodexo Operations, L.L.C.  
 Sovereign Bank  
 Dr. Ralph Spohn  
 Jean Huisling Steinschneider '48  
 Dolores Young Thebault '44  
 Monsignor Leonard R. Toomey

Regina Gallagher Torgalkar '66  
 Rosemary Daly Treacy '60  
 Dr. Benedict Trigani  
 Kathleen Scanlin Tschaen '66  
 The UPS Foundation  
 John Viterito  
 Wachovia Bank  
 Waldorf & Associates  
 Joan Ann Murphy Warren '68  
 M. Deborah Hanley Williams '68  
 Bette Jean Pickett Wintrich '49  
 Wisdom & Williams Associates Inc.  
 Ersula Zalenski  
 Peter Zalesky

#### **MCAULEY SOCIETY**

**\$500 – \$999**

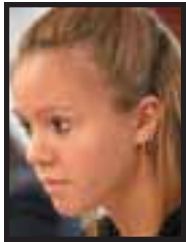
Aerial Sign North Inc.



Affiliated Direct Mail  
 Irene M. Alberts '73, '81  
 Alverno College  
 Carol Jean Jordan Anderson '72  
 Erin Avery  
 Janet Hartman Baker '69  
 Joan Barron '68  
 Dr. Mary Lee Batesko  
 Karen Hayes Beall '66  
 Dorothy E. Rohan Berry '51  
 Katy Beyer  
 Big Top Tent Rentals  
 Dolores Klepper Birdsall '37  
 Dr. Barbara Ellen Black  
 Randie Spencer Blauth '66  
 Book Bin  
 Marguerite DiBenedetto Brennan '63  
 Camille's Sidewalk Cafe  
 Justyna Mary Steuer Carlson '66  
 Joseph and Sharon Cavone  
 Church & Dwight Company Inc.  
 Margaret Cleary '51  
 Colts Neck Associates  
 Gary Gerard Conlon '95  
 John H. Cottingham III '99  
 Council of Independent Colleges  
 Mary E. Cranwell '82, '97

## HONOR ROLL OF DONORS

The Dancer Farm Bed & Breakfast  
Christine Jendzo Danker '75  
Daybreak Marketing Services  
GCU Delta Kappa Gamma,  
Nu Chapter  
Direct Title Corporation  
Rosemary Dunn '49  
Eileen Orsulak Eilenberger '65  
Farmingdale Consulting Group,  
L.L.C.  
Stephanie A. Ferrier  
Mary Sullivan Finizio '50  
Mary Runkle Fortuna '66  
Maureen Gearty '56  
Dr. Robert E. Gerke  
Cecilia Birdsall Gilman '62  
Giordano, Halleran & Ciesla, P.C.  
Gluck, Allen & Gertner, L.L.C.  
Loretta Tiefenbach Haggerty '47



Harrogate Inc.  
Donnamarie Irwin '67  
Cynthia A. Isdanavage  
Linda James, Ph.D.  
James R. Johnson  
Linda G. Jones-George  
M. Gail Judge Charitable Trust  
Sarann Glenn Kraushaar '65, '82  
Stan Kraushaar  
Lakewood BlueClaws  
Lakewood Industrial Commission  
Camilla R. Lauricella '06  
Liberty Mutual  
Robert Loudon, Ph.D.  
Lucent Technologies Foundation  
Mariann Mahon, RSM, '67  
Carolyn Martin, Ph.D., '68  
Mr. & Mrs. Michael G. McDonald '65  
Maryanne Witzgall Mead '87  
Mary J. Meehan, Ph.D.  
Mary M. Mewherter '05  
Jeri Miele '84  
Mary Ann Miller '69  
Monmouth-Ocean Development  
Council Foundation  
Dorothy D'Annunzio Mongelli '59  
The J.P. Morgan Chase Foundation  
Dawn M. Nakash

Neral, Anzelone & Company, P.A.  
Dorothea Scheuermann Nolan '49  
Northbrook Spring Water Company  
Frank O'Brien  
Linda M. Orlando  
Our Lady of The Angels Parish  
Linda D. Pesce '77  
PJ Designs Inc.  
PNC Wealth Management  
Murray Polner  
Marilyn Friel Powers '56  
Professional Orthopaedic Associates  
Maryann Giambalvo Pucilowski '72  
Quikie Print & Copy Shops  
Aurora Randazzise '73  
Barbara Ann Reilly '84  
Reliable Safety Systems Inc.  
Constance Anne Reymann '77, '00  
Maria Cordis Richey, RSM, Ph.D., '50  
The Ronan Agency Inc.  
Kathy M. Russell '83  
Elena Truncellito Santoro '64  
Lynne Mary McKinley Schicker  
'75, '85  
Mary Anne Hartigan Schrank '59  
Ted Servis  
Pat Busichio Shaheen '93  
Karen Estelle Smith '87  
Smith Tree Service  
Elizabeth Spero '66  
Stout's Charter Service  
Nancy Straman '82  
Dianne Theresa Strohmer '87  
SummitQwest  
Technosphere Inc.  
Elizabeth Gavan Trachtenberg '69  
Bob Walsh  
Weisleder Inc.  
Lois T. Driscoll White '48  
Helen Belli Wilson '54  
WithumSmith + Brown, C.P.A.

### KINGSCOTE SOCIETY

#### \$250 – \$499

Robert Albert Abatemarco '83  
Action Office Supplies Inc.  
Phyllis Allen '57  
Katherine Klebacher Alvino '66  
Amper, Politziner & Mattia, P.C.  
Richard Batesko  
Mr. & Mrs. Melvin Benjamin  
Adrienne A. Benzoni  
Robert Born  
Regina Fedor Brady '48, '78

Steve Bush  
Captain Frank Camarda  
Margaret O'Donnell Canzonier  
'66, '95  
Marian Knight Casey  
Catholic Charities,  
Diocese of Trenton  
Central Jersey Spine & Wellness,  
L.L.C.  
CentraState Healthcare Foundation  
Patricia Mihalko Cheslock '86  
Michael Codella  
Rodrigo Alejandro Colón '95  
Maria Alicia Garcia Colón '05  
Arlene Gula Connolly '70  
Margaret Punderson Convey '73  
Alice Hofmann Craghead '64  
Crestwood Jewelers  
Dr. Clara Martin Crimmins '79  
Eugene Frederick Croddick II  
Margaret Samson Cuthbertson '60  
Kasturi DasGupta, Ph.D.  
Tenzin Dawa  
Design Ideas Group Architecture &  
Planning, L.L.C.  
Diocese of Trenton, Office of  
Catholic Schools and Office of  
Catechesis  
Beth M. Healey DiTolla '66  
Dorothy Kerwin Dorney '64, '94  
Gloria Callahan Doyle '55  
John Duggan  
Dr. Timothy P. Duggan  
Mary D'Zio '41  
Lola and Jacob Elkes  
Mary Estelle  
Dr. Alan J. Fazzari  
Mary Ferguson '84  
Wanda Daniels Richards Finch '63  
Dolores Daloisio Floyd '65  
Mary Kenny Folan '66  
Marilyn Fontenelli  
Honorable Marlene Lynch Ford, J.D.,  
'76  
Jacqueline C. Ford  
Dr. Anne B. Fosbre  
Barbara McKinley Freer '53  
Joseph Gatsch '91  
Elizabeth M. Pfautz Gatsch '81  
Joyce Gavan '61, '82  
Patricia Gavan  
GCU Class of 2007  
Jack Gelsinon  
Sonjia Gundersen George '71  
Suzy Gilbert  
Sandra Ross Gold '63

Joseph F. Gower, Ph.D.  
Grant Thornton, L.L.P.  
J. Dawson Gray  
Mary Ann M. Coppotelli  
Gregory '63  
Mary Bowman Halpin '66  
Sonia Landy Harrison '70  
Patricia Doyle Hayden '73  
Dr. Lorraine Clauss Hellgeth '63  
Mr. & Mrs. Robert Holton  
Joan Fairchild Hooker '52  
Joanne Sullivan Huelsman '77  
Donna Esposito Hughes '66  
Donna Gabriele Hunter '64  
Antoinette Intravartolo '62  
Sharon A. DiDia Iorio '92, '96  
Catherine Gilday Jackson '82  
Lois Kuhn Jameson '58  
Florence Riccobono Johnson '45  
Mary Pat Donahue Johnson '54, '78  
Mary Eager Johnson '39  
Severina Keppler Jones '65  
Jostens  
Jumping Brook Country Club  
Elizabeth Beam Kast '55  
Mary E. Keelan '87, '06  
Francis J. Kelly, M.D.  
Honorable Honora O'Brien Kilgallen,  
J.S.C. '82  
Valerie Donnelly Kohl '60  
Dr. Carol J. Kontos-Cohen  
Matilda Greco Large '60  
Camille Lopez  
José A. Lopez '78  
Mary Lou Reese LoVecchio '62  
Jean Rapport Lowe '71  
Leone Czachorowski Mack '65  
Carol Baldino MacLennan '69  
Karyl Sager Mahoney '66  
Margaret Macfarlane Manna '66  
Margaret Sillers Martin '34  
Dr. Eugene R. Mason  
Catherine M. Mathey '37  
Betty McBain  
Margaret Fischetti McCoy, J.D., '69  
Kathleen Dill McElwee '54  
Kathleen Flaherty McGowan '59  
Sisters of Mercy of Merion  
Roger Messina  
Louise D. Milholland '82  
Mohel, Vogel, Elliott, Bauer & Gass,  
C.P.A., P.A.  
Carol Ann Schemen Mould '79, '83  
Stanee Pettit Murray '80  
Mr. & Mrs. Thomas Nadramia

Elizabeth Will Nanna '82, '84  
 Teresa Somerville Nelson '52  
 Rev. Joseph Novak, SJ  
 Robert C. Novy, Esq.  
 Novy & Associates, L.L.C.  
 Catherine Kelaher O'Brien '59  
 Elaine Ballance O'Connor '73  
 Joan Evans Olson '67  
 O'Neill's Bar Grill & Guesthouse,  
 L.L.C.  
 Virginia Orbe '64  
 Ruth Waldron Paul '58  
 Mary Peckiconis '83  
 Joan O'Leary Petite '58  
 PMK Group  
 Maureen Flaherty Post '78  
 Preferred Behavioral Health of New  
 Jersey Inc.  
 Prudential Foundation  
 Dr. Maria Martin Pyontek '79  
 Mary Galbo Randolph '61  
 Anne Grall Reichel '74  
 Barbara Eschelbach Reutter '66  
 Mary Connolly Richter '76  
 Mary B. Rogers  
 Theresa Christine Rooney '78  
 Mr. & Mrs. Joseph Roselle  
 Madelyn Ruddy '85  
 Maureen Ryan-Hoffman, C.P.A.,  
 '88, '01  
 S&B Promotions  
 St. John & Wayne, L.L.C.  
 Catherine Salas  
 E. Sambol Corporation  
 A. Claire Glanfield Sansone '62  
 Carol Blasi Schmelter '64  
 Kathleen M. Holland Sheridan '70  
 Mr. & Mrs. Thomas F. Shirk '51  
 Muriel Higgins Siccardi '39  
 Barbara Allan Simpson '58  
 Ida G. Squatrito Simpson '48  
 Jo Ann Meisel Snedeker '68  
 Hazel Estell Snow '42  
 Irma Carleton Spatz '40  
 Jodie Sherer Standart '71  
 Mary Fahey Steinberger '53  
 Joan Jebaily Stephan '51  
 Cheryl Stoeber-Goff '79  
 Robert Stoffel  
 Rosemarie Roeder Stone '66  
 Carol Strauss  
 Patricia A. Sweeney  
 Kathryn Wagner Szegda '71  
 Paul Tarantino '87  
 Tarantino Companies Inc., T/A  
 Plaza Liquors

Technology Access Inc.  
 Thomas M. Moore Painting  
 Tiberius Spa & Salon  
 Trump Hotels & Casino Resorts  
 Gloria Dey Tylutki '64  
 Monica Urban '74  
 Surekha Vaidya  
 Veterans of Foreign Wars of  
 the United States  
 Ann M. Robbins Villapiano '07  
 Jo Ann Wojcik Walter '77  
 Norman A. Washington  
 Jacqueline D. Wilson '76, '04  
 Cynthia R. Bartolf Wouters '72,  
 '81, '04  
 Jan L. Wouters, Esq.  
 Dr. & Mrs. Edward Wozniak  
 Donna Marie Ziemba '73

### CENTURY SOCIETY

\$125 – \$249

Peg Rainey Abbott '49  
 ACE INA  
 Susan Mary Orlando  
 Adaikalasamy '73  
 Affiliated Foot and Ankle  
 Center, L.L.P.  
 Mary Soos Alexander '62  
 Barbara Banigan Appleton '49  
 Catherine M. Healy Atwood '89  
 Ann O'Neil Bacon '59  
 Venetia Lynn Gilmore Banks '78  
 Robert R. Barbera  
 Ross H. Basen  
 Bulk Business Mail Specialists  
 Kathleen Muccie Bennett '60  
 Helen A. Bixenman '79  
 Addie Falivene Blee '48  
 Evelyn Bonilla '82  
 Elizabeth Ann Cirillo Bracco '61  
 Kathleen Halik Bradham '65  
 Lynn Straub Brady '71  
 Tracey L. Breckenridge  
 Audrey McLaughlin Briskey '48  
 Jeanne Innes Brown '54  
 Judith Austin Brown '65  
 Katherine O'Neill Brown '67  
 Lorraine Joyce Broszeit Brunelle  
 Barbara R. Schoberl Buck '70  
 Keith A. Buscio '04  
 Lynn K. Butler '68  
 Marie Butler '64  
 Rosemary Kleinhans Butler '60  
 Victoria Pukas Cacioppo '82  
 Grace R. Letizia Cairns '68  
 Lillian Jacqueline Murphy  
 Callahan '91  
 Camp Bow Wow  
 Constance Caputo '82  
 Maria Caputo-Polo '92  
 Dr. Rita J. Carney  
 Emily Ho Chiang '54  
 Anthony Chiariello  
 Angelo A. Chinnici, M.D.  
 Dr. Constance Chismar '72  
 Church of the Nativity  
 Teresa H. Clark  
 Carolann E. Beck Clynes '65  
 CME Associates  
 Mary Peter Coakley, RSM, Ph.D., '47  
 Dr. David W. Cochran  
 Janet A. Buchko Cohen '70, '84, '96  
 Coinmach  
 Janice Ellen Kneipp Collinson '70  
 Dr. Jack L. Conklin  
 James Coppola '89  
 County Line Hardware  
 Carlyn V. Rush Cox '56  
 Rosemary Shea Croop, Ph.D., '71  
 Elizabeth McGarr Cummings '61  
 Custom Steel Fabrication Inc.  
 Catherine Snyder Cymore '68  
 Stephen Daisak '02  
 Marguerite Laube Daley '44  
 Lisa Ann Kroposky D'Andrea '65  
 David Hill Masonry  
 Lillian Pinkasavage Davis '63  
 Jacqueline A. Day  
 Joan Marinar DeAngelis '65  
 Frances Decibus '52  
 Kimberley Ann Decker '88  
 Michelle Negro DeFiore '68  
 Marilyn DelVescovo '65  
 Kathleen Macchi Dennish '68  
 Mr. & Mrs. Carl DeRiso  
 Louella Bertoni DeVita '64  
 Jane Heher Dibert '57  
 Ruth Gail Riley Dotson  
 Janis Wilson Downing '74  
 Joan Scanlon Dugan '54  
 Jane Hopkins Dwyer '54  
 Maureen Edore  
 Maureen Drake Eiker '64  
 Allen E. Eliot  
 Josephine Ann Emburgia '68  
 Mary R. Enyart '74  
 Catherine L. Bouford Essner '84, '97  
 Exit Realty  
 Farewell Mills Gatsch Architects,  
 L.L.C.

Mark Farrell  
 Dr. Jane Farrell-Beck '63  
 Helen Czajkowski Fasshauer '82  
 Dr. Marylouise Fennell, RSM  
 Mr. & Mrs. Francis Fine  
 Christine Meyer Flanagan '73  
 Barbara Leslie Florimont '93  
 Denise M. Fontenelli  
 Food Circus Super Markets, Inc.,  
 T/A Foodtown  
 Lucy Ann Forcella '63  
 John Ford '96  
 Marie Maccarone Fortunato '71  
 Joanne Ferioli Fratterolo '63  
 Mary Ellen Fuhrman, RSM  
 Nadine Maciorowski Fydryszewski '77  
 GCU East Coast Florida Alumni  
 Chapter  
 Ronald Gaskill '81



Katherine Pillitteri Gatt '61  
 Laura Lee Gewissler  
 Jeanene A. Gibbs '01  
 Deborah Gilleran  
 Margaret Burke Gilmore '72  
 Girl Scouts of Ocean County  
 New Jersey Inc.  
 Kathleen McBride Goellner '64  
 Jean M. Goeltz '97  
 David S. Goldberg  
 Claudia Emilse Gonzalez '90  
 Good Friend Electric  
 Marjorie Mingione Grady '64  
 Anne Marie Boyd Grim '64  
 Margaret Grove  
 Caroline M. Smolinski Haney '93  
 Vicki Erbrick Heck '77  
 Dorothy Rowland Heinlen, Ph.D., '60  
 Kathleen Fitz-Maurice Hellberg '62  
 Mary Lou Owen Hirshmilller '71  
 Anne Tiffit Hitchner '64  
 Claudia Charles Hofmann '70  
 Marlena Holm '83  
 Dorothy Horner-Patchell  
 The IFF Foundation Inc.  
 Irish Centre  
 Dorothy Donohue Jacobs '69  
 Mary Ann Curry Kafer '80

## HONOR ROLL OF DONORS

Barbara L. Vogelsong Kannheiser '93, '98  
 John Michael Kearney '82, '94  
 Kathleen Kelly  
 Kelly Kilowatt Electric Company  
 Marita A. Kemp '52  
 Dorothy Kier '82  
 Elizabeth Spann Kneser '60  
 Mary Jane Koch  
 Catherine "Cacker" Lally Korten '61  
 Antoinette M. Kovak '99  
 Bruce Kramer  
 Mary Lou Szul Kramli '63  
 Peggy Jane Kudla '71, '79  
 April Louise Jordan Kugler '98  
 Clair Flynn Kuhn '67  
 Lady of America  
 Monsignor Casimir H. Ladzinski  
 Jeanette Macri LaMonaca '58



Susan Mary Landow '75  
 Brenda Joy Wolski Lane '65  
 J. Lorraine Oklamcak Laubach '54  
 Margaret MacFarlane Leimpeter '71  
 Susan Arndt Leonard '68  
 Gary Lieberman '07  
 Lion's Share Communications Inc.  
 John L. Little, D.D.S., F.A.G.D., P.A.  
 Claudia Carbo Lockard '48  
 Amy W. Lotano '95, '00  
 Lovely Laundries Inc.  
 Joan F. Costello Ludwick '81  
 Patricia Hopkins Lukacs '67  
 Kelly Dana Mabe '97  
 Marie Frances Dolan Mackanic, C.P.A., '85, '05  
 Claude Berhard Maignan '56  
 Jennifer R. Maloney '07  
 Marie E. Birrer Maloney '73  
 Judy Mannato '89  
 Grace Conway Mannery, Ph.D., '89  
 Joan Murphy Manning '50  
 Mary Ann Russo Marfia '76  
 Carmel Loreti Massari '56  
 Patricia Bray Matonak '52  
 Dolores Bauer Mayer '52  
 Patricia Ann Lakatos Mayer '74

Rose Marie Orsag McAtee '69  
 Rosemary Elizabeth McCabe, R.N., '92  
 Denise Shanahan McCarthy '47  
 Emily Quinn McCarthy '46  
 Evelyn McDowell '81  
 Theresa "Terry" and Jim McElroy '67  
 Patrick McMahan  
 Maja Marie Mariano Meighan '93, '04  
 Josephine Merlino  
 Mary F. Henderson Meyer '51  
 MGS Corporation  
 Denise LaFond Mickalites '69  
 Gail Gleason Milgram, Ed.D., '63  
 Lauretta Biasi Miller '68  
 Alice Coakley Mokrynski '82  
 Mary Jayne Tirrell Moran '52  
 Regina Morris '75  
 Sharon Brahn Morris '68  
 Madeline Murphy '69  
 National Conference for Community and Justice, New Jersey  
 New Jersey Devils  
 Mark John O'Leary '91  
 Mary Vida O'Leary, RSM, '70  
 Grace Chiniski Oliveira '54  
 Elizabeth Masters O'Neill '59  
 Patricia Scola Orbe '42  
 Laura F. Fortune Ortiz '04  
 Patricia Ann Daly Ouellette '76  
 Lorraine Baumann Palme '89  
 Maria Castelli Paretto '48  
 Frank Parks '89  
 Ora Bragg Parks '95  
 Frances Gregory Pasch '55  
 Perlmutter Family ShopRites  
 Virginia Beck Peterson '92  
 Suzanne Pilgram  
 Sheila Carter Platt '71  
 Dolores Klim Preston '64  
 Anita Lois Brown Prevost '89  
 Puglisi Egg Farms Inc.  
 Ramada Toms River  
 Regent Diner Inc.  
 Bernard Reider '78  
 Alan Reifenheiser  
 Regi Schramm Rennie '70  
 Anna Lou Edebohls Rhoades '51  
 Mary Ann VandenHeede Richards '63  
 Dr. Patricia Richwine  
 Virginia Dale Rimback '02  
 Dorothy Owsik Rohland '79  
 Patricia Romagna '85  
 Ann Ruth '72

Saint Mary of the Lake Parish  
 Church of Saint Monica  
 Maureen Sheehan Samaha '56  
 Ellen C. Culpepper Sandy '72, '79, '92  
 Marilyn Tighe Schaad '56  
 School Guide Publications  
 Bernadette Anne Markey Schultze '57  
 Seashore Fruit & Produce  
 Serenity Bay Spa  
 Theodora N. Christofi Sergiou '92  
 Scott Shaffer  
 Jane Devlin Shannon '57  
 Diane McGrath Sheehan '58  
 Susan Phillips Shuler '61  
 Siemens  
 Simply Affordable Travel, L.L.C.  
 Six Flags Great Adventure  
 Skrip's Classic Vending Service  
 Gail E. Smith  
 Geraldine Novik Smith '65  
 Margaret Mary Smith, RSM, '59  
 Stella Gallina Smith '68  
 St. Elizabeth Ann Seton Church  
 The Star Ledger  
 Donna Maciorowski Stec, M.T., '74  
 Kathleen O'Halloran Stevens '57  
 Stitch N' Sew Centre  
 Irene Dominik Storkan '52  
 Kathleen Sullivan '88  
 John Suri '82  
 Deborah A. Sweezy '06  
 Catherine Szap  
 Catherine Basso Szymanski '62  
 Mr. & Mrs. Robert P. Tamarin, Esq.  
 Rebecca Rood Thein '84  
 Annemarie Tierney  
 The Toa Reinsurance Company of America  
 Toms River Country Club  
 Toms River Regional Schools  
 Ritacco Center  
 Lynn Gildersleeve Torgersen '73  
 Dorothy Ward Toth '67  
 Carole Sherman Trakimas '66  
 Kathleen Mary Shiels Turk '78  
 Karen Walsh Vaughan '71  
 Paula Lakjer Veggian '67  
 Margaret Latanzio Ventruco '66  
 Cynthia E. Viant '76  
 Susan Rogers Vitella '62  
 Wachovia Corporation  
 Robert F. Walsh  
 Barry E. Ward  
 The Ward Wight Agency Inc.

Suellen O'Malley Waters '69  
 Judith Ann Tozzi Waterstraw '01  
 A. Collier Webb '62  
 Jeannine DuBois Welch '50  
 Welsh Chester Galiney Matone Inc.  
 Patricia Wepprecht-Smith '86, '95  
 Harry R. West '03  
 Gail Barnwell White '87  
 Wicker-Plus Imports, L.T.D.  
 Marguerite Shuler Wiecek '62  
 Dr. Benjamin R. Williams III  
 Lisa Marie Lecates Wilson '06  
 Rosemarie Gajewski Wilson '64  
 Stephen J. Wilson  
 Wincross Water Services Inc.  
 WOBBM, Millennium Radio, New Jersey  
 Woodlake Country Club  
 Toni E. Magruder Woodruff '79, '98  
 Elaine Yarusinsky '76, '82  
 YMCA of Western Monmouth County  
 Barry A. Young  
 Young's Appliance Sales  
 Thomas Zambrano

### HONOR SOCIETY

#### \$1 – \$124

Diane Ohlsten Aakjer '68  
 John and Kelly Abbate  
 Jennifer Rose Ruggiero Ackerman '03  
 Wendy J. Auriemma Acropolis '04  
 Rosemary D. Adamec  
 Holly McMackin Adams '70  
 Josephine Bencivenga Addeo, R.N., '91, '98  
 Elaine M. Adler '96  
 Delia Rivardo Adorno '61  
 Margaret-Rose Gibbs Agostino, M.S.W., '94  
 Vera Rose Aiello '86  
 Eleanor Alexander '91  
 Geraldine Smith Alexander '70  
 Algonquin Arts  
 Amy Allegretti '79  
 Laura T. Herr Almerini '88  
 Kathleen Lame Alpaugh '82  
 Robin R. Alston-Santiago '99  
 Wilma S. Sroka Alterio '95  
 Teresa D. Altruda '00  
 Donna Galgano Amon '72  
 Setsuko Matano Amou '57  
 Donna M. Fortunato Anderson '76, '83  
 Jane E. Anderson '81  
 Kathleen Norris Anderson '83

Rose Marie Crawley  
Andre-Johnson '50  
Maryann Anthony '93  
Lisa Marie Dickenson Applegate '90  
Nancy Hartvigsen Applegate '74, '95  
Victoria Applegate '07  
Kathleen M. Arleth '02  
Dorothy J. Armstrong '01  
Marcia E. Gander Arnold '68  
Josephine Arthurs '79  
Sherry Anne Bardsley Artz '93  
Nilda Muñoz Astor '53  
Susan Lynn Autenrieth '88  
Rhoda Brilliant Axelrad '67  
The Bacchus Winemaking Club  
Elizabeth Frances Lee Baché '99  
Mary Ellen Brady Baggitt '71  
Mary Ellen Huber Bakken '74  
Mary Valerie Balbach, RSM, '56  
Aida Peña Ball '52  
Allan C. Ball Jr. '85  
Linda Burke Ball '68  
Helen Ely Banas '51  
The Bank of New York  
The Bank of New York, Manasquan  
Joyce Bannister '77  
Lisa Marie Bannon '96  
Catherine J. Baran '01  
Harley Stephen Baretz '88  
Richard A. Barkett  
Rose Ann Barlowski '90  
The Barn at Calgo Gardens  
Paula Gelbstein Barnard '67  
Eleanor M. Kubon Barnes '60  
Jose Barquin  
Donna L. Barratt '98, '04  
Edwarda Barry, RSM, Ph.D., '59  
Sherry Bartee '82  
Patricia Capozelli Bassak '74  
Candace R. Rowden Bassat '75  
Mary R. Basso '67, '94  
Carole Mastasio Bauer '75  
Beverly Wowkanyn Bazylewicz '91  
Beach Rose Florist  
Mary Arthur Beal, RSM, Ph.D., '55  
Mary Ellen Beaton '78, '83  
Helen P. Bebel '02  
Kimberly Beers '92  
Carolyn Joan Gilbert Belena '97  
Carol M. Wymer Bell '75  
Valda Bendinskaite '02, '05  
Aida Rexach Benitez '52  
Mary Louise Voigt Benner '89  
Scott Bennett, Ph.D.  
Victoria Elizabeth Benson '93

Sharon Marie Berardi '94  
Michele Jose Berenwick '80  
Sharon McShea Berger '81  
Susan Berke '65  
Sofia L. Bernabe '04  
Laurel Lorenc Bernosky '84  
Nancy K. Berodyn '97  
Alexandra Cyr Berrett '74  
Kristine A. Bertollo '01  
Grace C. Bertone  
Joan M. Berzansky '85  
Colleen M. Kallighan Bezanson '82, '86  
Doris Albers Bicknell '65  
Big Sky Specialized Carriers Inc.  
Barbara A. Russell Birdsall '05  
Mary Birmingham '76  
Jacquelyn Suzette Birnkrant '04  
Lori S. Bischoff-Pasewaldt '97  
Susan Graef Bjork '69  
Jennifer Lynn Bjornsen '97  
Jessie A. Blair '94  
Dawn Marie Carroll Blumensteel '93  
Colleen Bartoldos Boeckle '70  
Jane K. Gallagher Bogert '79  
Carmen Bojorge '04  
Kacey Bonardi '00  
Gertrude Anne Halpin Bonavita '83  
Judith Bonavitacola '79, '87  
Michele DeFazio Bond '72  
Catherine A. Lammers Bookman '85  
Sharon C. Borgatti '04  
Bernadine Ann Jankowski Borowick '84  
Eleanor Egnativich Borris '80  
Kelley and Alan Borusovic '00  
Susan Coan Boston '76  
Constance Sharpe Bottomley '91  
Frances Klok Bottone '89  
Joanne Botwinick '96, '98  
John Bovie  
Mary Bovie  
Doris Bowden '84  
Susanne Miazga Bower '80  
Mary Nadine Boyle, RSM, '71, '80  
Gina Petrocelli Boyles '89  
John J. Bradley '80  
Linda Fortner Bradley '86  
Sharon Bradley '81  
Audrey H. Brainard '85  
The Breakers Hotel  
Maureen Ann Breault '86  
Carole Breckinridge '75  
Mary Phyllis Breimayer, RSM, Ph.D., '63

Pamela Marie Dreher Breitenbach '91  
Anne Brennan  
Corinne Lucier Brennan '88  
Eleanor Lame Brennan '42  
Jacqueline O'Connor Brennan '86  
James S. Brennan  
Patricia Maher Brewer '67  
Elena Conti Brewster '55  
Judith Ann Talarico Briar '95  
Jacqueline Marie Feldman Bricker '87, '99  
Irene Mountenot Brignola '64  
Vivian Salamandra Brink '73  
Janice Cragg Broadbelt '91  
Jennifer Renee Brodsky '95  
David Drew Brooks '06  
Joy K. Eayre Brower '63  
Ken Brown  
Dr. Theresa J. Brown  
Evelyn Gallagher Browne '76  
Helen Browne '82  
Helen Repko Bryce '80  
Jean Tobiassen Bucci '92  
Diane L. Smith Buckley '92  
Maria J. Bucsanszky '98  
Mary Streep Buczynski '04  
Naomi D. Buechner '97  
Rose Marie Letizia Buhrlé '71  
Mary M. Bulman '78  
Neida Miguel Bures '52  
Nancy Mydosh Burgas '63  
Deborah Gero Burke '89  
Deborah Burns '98  
Elizabeth Molnar Burns '74  
Patricia Higgins Burns '75  
Ashley R. Buron '07  
Rosalie Burrows '66  
Ellen Murray Burstein '69  
Tracie Marie Butch '88  
Barbara Butensky '77  
Mary Ellen Morris Byrne, Ph.D., '61  
Karen Mazzonna Cabey '86  
Maria C. Cacoilo '00  
Donna M. Reilly Cade '97  
Nicholas J Caivano  
Margaret B. Calafato '79  
Linda C. Calandra '75  
Elissa Rotolo Cali '02  
Regina Marie Callahan, RSM, '72, '99  
Diana Volta Calta '42  
Joan G. Campana '53  
Jacqueline S. Campbell '94  
Patricia Campbell '86  
Rose Ellen Woodhouse Campbell '72

Joanne Camper '84  
Amelia Canali '76  
Joseph and Deanne Candela '01  
Elsa Gualtier Cannella '65  
Margaret Cannin '85  
Anthony Capone  
Carel Pharmacy  
Rose A. DeVivo Carlo '05  
Grace Catherine Covello Carlson '73  
Marie Janoski Carltock '64  
Josephine M. Carney '07  
Mary Pagano Carpenter '68  
Carol Ann Marie Cherivtch Carr '83  
Eleonora R. Carr '06  
Jo-Anne Scocchio Carra '69  
Justine Hogan Carrigan '64  
Dr. James J. Carroll  
Lisa M. Carroll '99  
Marilyn B. Carter '74



Renee Sylvia Vaz Casadonte '91  
Ann Marie Casella '94  
Judith Casey '79  
Mary Ann Casey-Schino  
Bonnie Bruder Castellano '89  
Monique P. McLaughlin Castillo '75, '92  
Ruth Marie Drexel Castle '46  
Ann Ludlow Catlin '99  
Dorinne Vassallie Cattelona '86  
Mary Ann Cavallaro '75  
Lois Huether-Perine Cavico '77  
Elissa Rosasco Cella '66  
Jessica L. Cellini '97, '05  
Deborah Lynn Cerrato '92  
Joyce Cervati '80  
Pamela Chabak '80  
Bruce Chamberlin  
Mary Kimberly Herring Chamberlain '94  
Marie Anna Han Chang '59  
Chantilly Too  
The Chapter House  
Mr. & Mrs. John A. Charles  
Robert Charlie '86  
Charlie Brown's Steakhouse  
Chefs International Inc.  
Patricia Chenoweth '73

## HONOR ROLL OF DONORS

Barbara Downing Chetkin '58  
 Patricia Helbig Chiappa '65  
 Margaret DeLamater Chibookian '57  
 Arlene Marino Chiumento '87  
 Marianne Chorba '67  
 Kathleen Lee Choy '57  
 Andrew Christ  
 Karin Olinow Christen '75  
 Harold T. Christensen  
 Carol Collis Christie '54  
 Mary Lynne Christie '81  
 Karen L. Christinat '88  
 Nancy J. Ciampa '69  
 Francine DeSantis Ciampaglio '81  
 Susan Consolinagno Cianflone '95  
 Mary Ann Sullivan Ciecuch '67  
 Dr. Joseph J. Cino  
 Sarah Clancy '74  
 Alice M. Donegan Clark, R.N., '97



Barbara L. Clark '75  
 Patricia Milunec Clark '68  
 Virginia Ardolino Clark '75, '96  
 Janet Lamb Clarkson '60  
 Wendy S. Winn Clayton '01  
 Jeanne Shaughnessy Clewis '46  
 Karen Louise Caruso Clinch '87  
 Mary Agnita Coakley, RSM, '58  
 Loretta E. Cody '02  
 Barbara Coelln '79  
 Kathleen Roos Cofield '68  
 Deborah Kardos Cohen '88  
 Lauren M. Jordan Cohen '88  
 Mary Catherine Cole '01  
 Francine Zurcher Coleman '97  
 Elizabeth McIntyre Collins '54  
 Robin Ann Collins '85  
 Janet E. McKinney Colyard '01  
 Pamela Theresa Conner '97  
 Marion T. McPolin Conrad '92  
 Karen McNish Contreras '85  
 Marie Cook, RSM, Ph.D., '64  
 Lauren J. Coppolino '06  
 Russell K. Corby  
 Joan Marie Sakelaris Corcione '95  
 Barbara J. Doyle Corning '57  
 Arthur Charles Corr '97

Paula Magliato Correale '70  
 Kimberley Ann Schaller Corso '94, '06  
 Cathy L. Costino '86  
 Annmarie Elizabeth Dalton Cote '91  
 Georgianna Cote '82  
 June Dezendorf Cottrell-Miller '07  
 Kathleen Halm Coulter '89  
 Susan Fioretti Cowdrick '82  
 Deborah C. Cox '04  
 Kevin Coyle '82  
 Marilyn A. Hart Coyle '76  
 Mary Louise Coyle, RSM, '63  
 Elaine Frances Conley Cranmer '97  
 Dr. F. Thomas Crawley  
 Carol Creamer, RSM, '69  
 Margaret E. Wilkinson Creamer '98  
 Creative Design and Production  
 Janet Teresa Crimmins Creech '98  
 Margaret Eichinger Crisafulli '82  
 Mrs. Alicia Crosby '00  
 Margaret E. Crowley, RSM, Ph.D.  
 Margaret L. Bauman Cruse '83  
 Dr. Mary Kay Isele Cullinan '83  
 Luisa Rodriguez Cumbo '73  
 Jo Ann Kelly Cummins '64  
 Karen Povacz Cunningham '73  
 Danielle M. Curivan '02  
 Caroline Lewis Curran '50  
 Dr. Mimi da Silva  
 Lynn Cimiluca Daley '69  
 Patricia Dalm-Moreland '75  
 Toni D'Ambrisi '06  
 Mallory D'Amico '06  
 Dawn Daniele '03  
 Gina A. D'Annunzio '04  
 Anna Lionetti D'Antonio '05  
 Mary McCabe D'Aquila '75  
 Catherine Darcy, RSM, '72  
 Gwen Diana D'Arpino '92  
 Kerri Davenport  
 Alana Maiorano Davis '74  
 Ann Marie Alvin Davis '52  
 Patricia Anne McCormick Davis '69  
 Barbara Ann Budkoski Davit  
 de Jensen Salon & Spa  
 Barbara A. DeChiaro '98  
 Karen Lee Deikun '89  
 Andrea K. Krone DeJohn '98, '03  
 Rosemary Scafidi DellaSala '85  
 Susan Selzer DelTufo '75  
 Theresa Pepper DeLuca '58  
 Gloria Quattrone DeMarzo '74  
 Michelle T. DePolo '03  
 Margaret J. DeProspo '04

Maria S. Derr  
 Paula Desch '02  
 Michael J. DeVita '96, '01  
 David DeVito '05  
 Frank and Valerie Diamente  
 Daniel J. DiBenedetto  
 Marcia A. Dickinson '02  
 Paula and David Dickinson  
 John Diederich  
 Theresa Banko Dietrich '51  
 Gertrude Szilagy DiFrancesco '59  
 Joan E. Rojek Dincuff '66  
 Diane Gonzalez DiPiero '91  
 Lucina Buckley Dippel '50  
 Michele A. Dlugos '01  
 Judith A. Russo Doherty '84  
 Debra Dolan  
 Joanne Eustice Domingo '81  
 Joan Szulecki Donatiello '52  
 Rosemarie Claire Donato '90, '95  
 Leigh Ann Doninger '97  
 Patricia Marie Donlin, RSM, '85  
 Marie Michele Donnelly, RSM  
 Colleen Connerton Dooley '77  
 Linda S. Hennessey Doran '00  
 Dana A. Doran-Polk '97  
 Alice D'Orazi '73  
 Erin E. Dorney '03  
 Kathleen Dorry '99  
 Anne Marie Kilmurray Dorso '76, '82  
 Virginia Dossena '67  
 Brooks Dougherty  
 Jacqueline Jordan Dougherty '58  
 Jennifer Dougherty  
 Laura A. Bongura Dowd '69  
 Barbara Doyle '76  
 June Doyle '59  
 Ursula Lafferty Doyle '49  
 Mr. & Mrs. Mike Dragin  
 Keith Drennan  
 Ellen Driber-Hassall '79  
 Christina Faith Duffy '91  
 Ellen A. Dugan  
 Lisa Anne Durante '91  
 Frances Turecamo Dwyer '50  
 Jill Diane Ebeling '05  
 Patricia Ann Bauer Eberhardt '98  
 Phyllis Eckert '89  
 Marjorie Ann Douglas Edelson '89  
 V. Roy Edwards Jr. '00  
 Yvonne Bakker Edwards '97  
 Susan Eggert '73  
 Kathleen Bowers Einhorn '72  
 Mary Mercedes Eisenman, RSM, '42

Linda Daube Elko, R.N., '91  
 Jason W. Ellersick '00  
 Susan Cunningham Elliott '68  
 Jane Peterson Ellis '78  
 Sandra D. Ellis '03  
 Georgia Elms '80  
 Joseph Paul Emanuele '86  
 Sharon Turunen Emmons '79  
 Faith E. Curry Ende '04  
 Karen Dalm Engan '73  
 Martha Engel '72  
 Cindy A. Messina Enright '07  
 Cindy Erickson '85  
 George Erickson '83  
 Samantha Esposito '06  
 Donna Maria Evangelista '03  
 Victor T. Evans '99  
 Patricia A. Ewart '00  
 Benecks Fabien '00  
 Kathleen Middleton Faddis '73  
 Barbara A. Backus Fahley '68  
 Luana Fahr  
 Regina Clancy Falcinelli '57  
 Catherine Elizabeth Dolan Famelio '92, '99  
 Linda Kavanaugh Fanning '69  
 Mary B. Balmert Farmer '48  
 Helen Farley Farrell '38  
 Caroline Woolston Farrow '68  
 Diana Clark Fassett '77  
 Barbara Anne Potter Fasting '58  
 Nancy Nicolini Fawkes '72  
 Ronald Fay  
 Jeanne F. Kissane Fazio '94  
 Kristen L. Feather '06  
 Nancy Fedor '75  
 Jane E. Gillis Feret '68  
 Barbara Ann McCarthy Ferlise, C.P.A., '93  
 Deborah A. Ferris '00  
 Debra Simone Ficarra '93  
 Mary Beth Field '84, '96 and  
 Tim Holton '89  
 Ana Figueroa  
 Jeanette Finan '71  
 Julie Mapleson Fink '57  
 Andrea Ann Fiore '92  
 Karen Gadek Fiorentini '78  
 Dr. Mario Fiorentini  
 Nellie Fiorentino  
 Glenda Yencho Fischer '70  
 Julia Fisher '80  
 Kate Kellenyi Fitzgerald '74  
 Dr. Susanne Elizabeth Schaible  
 Flannelly '86  
 M. Theresina Flannery, RSM, '57

Gail Flannigan-Rufer '68  
 Kelli Rose Flitton '07  
 Ann Flynn '67  
 Joanna Lyons Foley '62  
 Foodarama Supermarkets Inc.  
 Linda Cermele Forgione '85  
 Lila Forsberg '89  
 Gail Clark Foster '69  
 Susan Foster '75  
 The Four Winds  
 Paulette K. Fox '06  
 Rosemarie Fracassi '68, '86  
 Ann Marie Damiano Francis '78  
 Carin Francisco '04  
 Jenine Maria Francolla '07  
 Jean M. Frank '73, '79  
 Patricia Franklin '68  
 Lori A. Freeman '86  
 Marlene Fritz, RSM, '64  
 Mary Louiseann Fritz, RSM, '71  
 Christine Fuhs '00  
 Joan Boodram Fuller '07  
 Patricia A. Rugarber Fuschetto '90  
 Steven V. Fusco  
 Joan Kozusko Gadek '52  
 Gaetano's  
 Richard and Anna Gaffney  
 Lorraine Sup Gajdzis '75  
 Gail M. Gall '04  
 Daniel J. Galligan  
 Patricia E. Gallin '67  
 Deborah A. Gallucci '02  
 Kathleen Claire Galya '78  
 Claudia M. Gant '78  
 Rita Ann Gant '73  
 Arlene Grossman Gaona '91  
 Gloria J. Garcia, Ed.D., '61  
 Garden State Philharmonic  
 Anne Turtura Gardner '83  
 Evelyn L. McCoy Gardner '98  
 John Garrett  
 Sheila Gaspari, R.N., '80  
 Charles Gates '00  
 Carolyn Scimeca Gatti '68  
 Georgina Tomasetti Gaughran '71  
 Patricia Geary, G.N.S.H., Ph.D.  
 Debra A. Geiger '07  
 Mary Christina Geis, RSM, '49  
 Ann Gorris Gelehrter '71  
 Barbara Kalb Geller '70  
 Mary Terena Gentili, RSM, '70  
 Leigh Michil E. George '03  
 Darlene B. Gerber '01  
 Nancy Kathleen Lynch Geschke '73

Jennifer Giacobbe '04  
 Jack Giameo  
 John Giavatto  
 Maria G. Giavatto '87, '96  
 Dr. Mary Ann Boland Gibbs '76  
 Kathleen Roach Giblin '90  
 Debra M. Gieda  
 Kathleen Meder Gifford '73  
 Helen E. Lokken Giglio '99  
 Rosemary Shelare Gilbride '38  
 Terry W. Gilmore  
 Theresa A. Grandinetti Gilvary '93  
 Debbie Ann Giordano '78  
 Palma Trilli Giordano '55  
 Tess O'Brien Giuliani '71  
 Ann Almeleh Glick '78  
 Corrine E. Ott Glowacki '75  
 Lucille G. Brodes Gluck '77, '84  
 Susan Paige Glynn '88  
 Patricia A. Goertz '99  
 Deborah A. Goodman Gold '96  
 Cheryl Ann Golden '99  
 Miriam Golden, RSM, '70  
 Phyllis Cherry Goldfarb '59  
 Marsha Kay Held Goldner '90  
 The Golf Academy Inc.  
 Mary Gomolka, RSM, '67  
 Dr. Marilyn E. Gonyo-Diehl  
 Lisette Gonzalez '99  
 Vera Schomp Gordinier '64  
 Cherry A. Gray Gordon '85  
 Theresa McDermott Gordon '83  
 Glenn Gorney '80  
 Patrick M. Goudie  
 Roshni M. Govan '02  
 Stephen E. Govel Jr.  
 Donna Derent Grabert '73  
 Christine Anne Peterson Granata '93  
 Rosemary A. Granato  
 Kathleen Tooker Granstad '73  
 Donna Horan Grant '73  
 Lamar Grant '94, '99  
 Linda M. Grant '99  
 Geralyn Stelle Gray '89  
 Maureen Greet '86  
 Amy L. Gretkowski '06  
 Donald and Deborah Gries  
 Elizabeth Nalty Griffin  
 Sally Ash Griffin '91  
 Marilyn Grimley, RSM  
 Denise Kozinski Grippaldi '95  
 Rosemary Cox Grygo '62  
 Mary Ellen Guariglia '94  
 Mary Lou Wnukowski Guididas '66

Tracey Guido-Paul '96  
 John H. Gunderson '01  
 Eileen Gunning '85  
 Janice Griffin Gurley, A.S.C.P., '76  
 Mary Gurley, O.S.F., Ed.D.  
 Mary Ruth Hague '77, '87  
 Karen J. Hahn '00  
 Christine Mary Haines '04  
 Mary C. Foley Halaycio '67  
 David A. Hallion '06  
 Margaret House Hanford '68  
 Jill Beverly Hankins '91  
 Barbara Truchan Hanna '72, '94  
 Vivienne Pisciotto Hardeen '47  
 Lauren Marie Mindnich Hardman '95  
 Michele Lynn Hargrove  
 Diane Coniglio Harlowe, O.T.R., '69  
 Amanda A. Harpe '00  
 Marianne Harrell '02  
 Carol Fine Hart '79  
 Percylee Hart, RSM, '67  
 Donna M. Tavani Hartman '81  
 Dorothy Hartman '76  
 Kathleen A. Hartman '02  
 Valerie Hartwyk  
 Honora M. Harvey  
 Maria Candela Hasenhuttl '52  
 James Joseph Hauenstein '88  
 Dr. Diane Haviland  
 JoAnn A. Aloia Hayden '02  
 James C. Healey  
 Sandella Comune Healey '76  
 Linda Edith Eberling Healy '95  
 Mary Hearn  
 Mary Jo Hedden '71  
 Virginia Hamel Heffernan '47  
 Patricia Heitzman '89  
 Catherine A. Frunzi Helbers '67  
 Joann Darrar Heller '86  
 Kelly Henchion '07  
 Elizabeth Breiner Henderson '89  
 Kathryn E. Hendrix '00  
 Ann Marie Garrett Hennessey, M.D., '88  
 Mary-Frances Callery Hennessy '56  
 Anne Sharon Fitzpatrick Henry '97  
 Amy M. Henwood '01  
 Jane Nagel Hernon '77  
 Judith Burdette Herr '89  
 Nancy Herron, RSM, '71  
 Andrea B. Herschel '70  
 Michelle Lynn Morley Hesson '97  
 R. Francis Hewitt, RSM, '52  
 Carol Ann Hickey '64  
 Alice Annemarie Hickok '95

Cynthia H. Martin Hicks '92  
 Agnes Moore Higgins '39  
 Diane McCallum Higgins '85, '90  
 Jane Higgins, RSM, '56  
 George Hamilton Hill '82  
 Margaret B. Hill '43  
 Renee Fiorito Hill '71  
 Hillier Architecture  
 Kathleen O'Sullivan Hinckle '66  
 Christine Riva Hines '95  
 Celeste DeMarco Hinlicky '06  
 Inger E. Hinrichsen '99  
 Marcia M. Hitzel '94  
 Annette G. Baranowski Hockenjos '78, '88  
 Paula Tunis Hoff '92  
 Ruth Cramer Hofmeister '75  
 Lois Anne McDarrell Hohmann '78  
 Patricia Holcomb-Gray '85



Kathleen Cassidy Holevinski '86  
 Marianne Holler, D.O., '81  
 Francesca Holly, RSM, '69, '00  
 Janet Holly '75  
 Jennifer L. Holm '02  
 Donna Woerner Homschek '88  
 Joan Rosebluth Hoonhout '51  
 Patricia J. Keenan Hoppe '88  
 Carolyn Roes Hopper '79  
 Susan Ashley Hopson '02  
 Barbara A. Houghton Horahan '98  
 Carolyn Mulvihill Horan '85  
 Zita Cullinan Hornidge '79  
 Michele Hosang '76  
 Carole Clements Howell '84  
 Diana Hrunka '07  
 Walter Joseph Hrycenko '92, '01  
 Ann Marie Ayers Hubbard '70  
 Christine Tartaglia Hubner '73  
 Margaret M. Casarella Humcke '91  
 Anne L. Hunt '01, '06  
 Mary Elizabeth Hunt '68  
 Patricia Steiner Hunt '59  
 Claire Hunter '68  
 Linda Louise Hurley '95  
 Elizabeth Carlson Hurst '90  
 Karen Sala Ianniello '76

## HONOR ROLL OF DONORS

Patricia Lynn Ignaccolo '87  
 Mary Ann McFadden Ihrle '72  
 Cara A. Guastella Imhof '00  
 Eleanor M. Imperato  
 Judith Ann Pinelli Impreveduto '91  
 Carole Lee Infante '04  
 International Paper Company  
 Foundation  
 Diana Diggins Isaacs '80  
 Cheryl A. Shedlebower Jakob '90  
 Barbara Albers Jackson, Ph.D., '63  
 Dan Jackson  
 Daniel P. Jackson  
 Darcy Marie Doll Jackson '88  
 Jeanette Jackson '95  
 Joyce Jacobs, RSM, '67, '02  
 John T. Jacoby  
 Monica Mary Jacques, RSM, '61  
 Alexis James '03



Juliann James '06  
 Kathleen Janes '84  
 Emily Held Jankowski '72  
 Marilyn Janus  
 Carol Jaruszewski, RSM, '69  
 Marietta Jean Jazikoff, C.P.A., '87  
 Jean Louise Home Made Candies  
 Linda Foerst Jelley '92  
 Julia P. O'Keefe Jensen '87  
 Jane Bissey Jensen '87  
 Christy A. John '07  
 David A. Johnson  
 Joan Livingston Johnson '66  
 Sharon Johnson '04  
 Terese Giangola Johnson '76  
 David A. Jones  
 Elizabeth H. Jones '80, '99  
 Michele S. Merz Jones '98  
 Patricia McDonough Jones '74  
 Clare Driscoll Jordan '69  
 Mary Kakavas Jordan '97  
 Roy Joseph  
 Deborah Ann Josko '93, '96  
 Jackie Joule '76  
 Lucie Gerhardt Jude '83  
 Jean Judge '81  
 Carolyn Eleanor Stoll Kacedon '96

Sheryl B. Kalash  
 Donna Kalinski  
 Patricia Kall '71  
 Cynthia A. Kalman '94  
 Jane Kane '50  
 Deborah J. Kanter '05  
 Claire Riordan Kappler '47  
 Heather Jan Muller Karagias '00, '04  
 Karen's Boutique  
 Cynthia Anne Kuncken Kasten '95  
 Patricia Jehle Kayal '64  
 Susan E. Anklowitz Kazala '74  
 Mary Jo Kearns, RSM, '68  
 Jean Kennedy Keck '74  
 Eileen Keefe '67  
 Constance Carr Keehn '78  
 Bobbie Portaleos Kehoe '99  
 Christine Gretkowski Keil '91, '99  
 Ida Sanitate Keiper '81  
 Suzanne Catherine Saake  
 Kelbaugh '99  
 Krista E. Keleigh '00  
 Kathleen Regan Keller '76  
 Scott Erskine Kelley '03  
 Jeannette Kellington '88  
 Ann O'Connor Kelly '65  
 Linda LeBlanc Kelly '65  
 Patricia Kelly  
 Tom and Donna Kelly  
 Joan Coughlin Kenefick '72  
 Joan Reardon Kenneally '80  
 Charlene Ann Erbe Kennedy '82  
 Frances Kerr '43  
 Sharon J. Kerr-Reed '04  
 Anne L. Nash Key '80  
 Dawn Marie Kibitlewski, C.P.A., '89  
 Jennifer Lynn Dully Kijak '99  
 Mary Theresa Kilcomons, RSM, '68  
 Gregory James King '00  
 Mary Kay Doyle King '73  
 Noreen Walsh King '81  
 Elizabeth A. Kingston '93  
 Kathleen Byrnes Kircher '68  
 Evelyn M. Kiss  
 Klee's Bar & Grill  
 Klein's Fish Market and  
 Waterside Cafe  
 Phyllis B. Cervantes Klick '93  
 Winifred Klimek '07  
 Vera Reinhold Kling '48  
 Linda K. Urban Klose '99  
 Kathleen Kluk '93  
 Eileen M. Kozlark Kochis '00  
 Cherril Kolesik '69  
 Virginia Kathleen Krych Komar '76

Jelena Lobza Komitas '04  
 Dr. Leslie Korb  
 Nicole M. Korona '06  
 Kathleen Pursell Korp '81  
 Jennifer S. Bobish Koscinski '96  
 Karen Ann Kuciel Kozlowski '97  
 Laura C. Kozlowski '03, '07  
 Alan J. Kraft '04  
 Phyllis Krauss '85  
 Rebecca Anne Kremer '88  
 Eileen A. Fitzpatrick Krueger '49  
 Sally Ann Licks Kruper '61  
 E. Janet Kruysman '87  
 Diane E. Kubus-LaBate '04  
 Donna Anne Kuch '78, '84  
 Leslie Kumer  
 Diane Baunach Kunkel '90  
 Mary Pauline Kuntne, RSM, '59  
 Regina A. Kurdeewan '01  
 Frank L. Kurre  
 Angela Lentine Lachenmayr '65  
 Noreen O'Donnell Lackett '67  
 Michelle R. LaCrosse-Schiel '97  
 Phyllis Lagerman '80  
 Meurice J. Lake '64  
 Marilyn Christine Lamb '62  
 Lucille DeAngelis Lambrech '66  
 LandAmerica Financial Group  
 Landmark Books  
 Barbara Marcino Lando, Ph.D., '62  
 Kathleen T. Goresch Langenbacher '00  
 Douglas C. Langlois '98  
 Roberta S. Langman '00  
 Anna M. Lapaglia '88  
 Catherine D. LaPlante  
 Patricia Marie Larson '91, '98  
 Susan Patricia Lasala '78  
 Alice Marie Latham '89, '00  
 Michael and Mary Latteri  
 Abigail Gile Lauterborn '79  
 Suzanne Cavanaugh Laven '69  
 Tracy Alva Lawder '88, '03  
 Leona Bradley Laycock '79  
 Melissa K. Layton '99  
 Dorothy Lazarick, RSM, '67  
 Wendelin Leadem, RSM, '60  
 Jan S. LeBaron '84  
 Maureen Quigley Leck '51  
 Susan Miley Lee '71  
 Wendy S. D'Agosto Leeman '03  
 Carl A. Lefevre  
 Laurie Anne Terry Lejda '93  
 Joann Lemaszewski '06  
 Lucille Visceglia Lenskold '64

Bridget Jennifer Leone '07  
 Lori J. Letizia '02  
 Megan Leuthner '04  
 Dr. Stephen Levine  
 Beverly Holzberg Levy '61  
 Grace Spitale Lewis '82  
 Mary Brenda Lewis  
 William Lewis  
 Dr. Lorraine Licata  
 Laura Liesman  
 Candace Lillie-Oglesby '79  
 Clark Lindstrom  
 Susan Lindstrom  
 Ann Miller Linton '86  
 Mary Patricia Lisk '81, '92  
 Joyce C. Little '02  
 Sherri C. Loblein '87  
 Phyllis Hanie Lockhart '56  
 Lockheed Martin  
 Magdalene Lodato, R.N., '74  
 Eileen Loehfelm, RSM, '74 †  
 Janet Loguirato-Lawson '72, '90  
 Mary Caffrey Lohmann '77  
 Chanie Lolla '87  
 Adele Bullock Lombard '49  
 Deborah E. Troy Lombardi '78  
 Katherine L. Lombardo '05  
 Jaclyn M. Tremel Lomer '95  
 Jennifer Krupp Londell '00, '03  
 Joyce M. London '80  
 Joanne Loney '72  
 Veronica Lonon  
 L'Oreal USA Inc.  
 Theresa A. Lorenson '04  
 Kim Lorentzen '06  
 Rose Loscarso '53  
 Nancy Patricia Loughran '00  
 Eileen Lowden, RSM, '72, '82  
 Danielle A. Lucas '03  
 Kimberly Herbert Lucas '97  
 Anna Luibil '07  
 Barbara Luichinger '73  
 Carolyn King Lumia '97  
 Amelia C. Luongo  
 Lorri Shoplock Luongo '80  
 Crystal A. Lurker '94  
 Donna Marie Luzzi '82  
 Elizabeth McGill Lyons '57  
 Kristen Ann Macaluso '01  
 Carole A. Mack  
 Michele Lynn Otowski Mack '96, '02  
 Carolyn J. Roth Madigan '56  
 Maegreen Gifts Inc.  
 Cecilia H. Magee '01, '05

Christine Jones Magan '96  
 Robyn Saul Magovern '80, '92  
 John Maher  
 Valerie J. Prevosto Maher '72  
 Annamarie Mahieu '02  
 Main Street Gallery  
 Maryann Fawkes Maiorine '79  
 Shirleyanne J. Holmberg Maken '95  
 Myra Malamut  
 Linda M. Monek Malayter '77  
 Jill Marie McCoy Maloney '85  
 Mary Mancini '05  
 Brenda Mandell '76, '83  
 Jean Anne Tuzeneu Manigold '98  
 Michael R. Manson Jr. '97  
 Michael C. Marchese Jr. '98  
 Allison Marcucci  
 Maria's Italian Cuisine  
 Steven J. Maricic  
 Michelle Elizabeth Fernandez  
 Marino '97  
 Eileen Markey '65  
 Alice Anne Marks '96  
 Lucille Marley '73  
 Susan M. Caprio Maron, R.N.,  
 '91, '98  
 Bonnie Anne Marr '87  
 Joseph Marrone '94  
 Daryl Barbara Marsala '73, '80  
 Jaime Leigh Marsh '04  
 Lori Ann Martelli '91  
 Mary Ann Martin  
 Patricia Sheeran Martin '57  
 Sarah Martin '83  
 Mary Chrysostom Mason, RSM, '70  
 Judith Ruberton Matarazzo '69  
 Barbara Nulty Matthews '85  
 Amy Anne Matulevich '96  
 Chi-Ngoc Luc Mauterstock '70  
 Nancy Maxwell  
 Victoria A. Maxwell '02  
 Audrey R. Maxymuk  
 Anne Cackley May '69  
 Elinor Murphy May '47  
 Christine M. Mayer '00  
 Eileen Mayer '81  
 Kathleen J. Mazza '02  
 Carol Torok Mazzarella '92  
 Mary Ellen McAlevey '85  
 Patricia Daly McCabe '82  
 Delia McCarthy '85  
 Mary-Theresa McCarthy, RSM,  
 Ph.D., '57  
 Michele McCarthy '03  
 Colleen Ann Mahan McClusick '87

Sharon L. McCormack '99  
 Theresa Ann Fowler McCormack '87  
 Mary Ellen Wormann McCrystal '68  
 Margaret Cummings McCullough '68  
 Susan Dornacker McCullough '99  
 Nancy Ann Sekowski McCusker '91  
 Susan Krisanda McDonald '82  
 Joanmarie McDonnell, RSM, '55  
 Kathleen McDonnell, RSM, '70  
 Mary Louise McDowell '00  
 Susan P. Bathmann McErlean '99  
 Mary Jo O'Leary McFadden '71  
 Elizabeth A. McGarry '86  
 Virginia McGarry, RSM, '44  
 Mary McGurl McGinley '40  
 Mary Assisium McGlinn, RSM, '57  
 Clarence A. McGowan  
 Sheila McGrail '69  
 Catherine Elise Murphy McGrath  
 '85, '95  
 Dorothy Dillon McGrath '63  
 Rita McGurk, RSM, '59  
 Sheryl McHale '87 †  
 Jill A. McHale-Serina '00  
 Sharon C. McInnis  
 Mary deSecours McIntosh, RSM, '54  
 Elizabeth McKeefe '83  
 Carole McKenna '86  
 Elizabeth Quinn McKenna '52  
 Mike McKenna  
 James Edward McKeon '01  
 Joan McKeon, RSM, '68  
 Patricia Lynn McLaughlin '89  
 Francis McMahan '91  
 Mary Ann McMahan '82  
 Patricia Ann McMahan  
 Jennifer M. McManus '04  
 Celeste McMenamin '73  
 Joyce A. Nicholls McNamara '99  
 Elsa Uhler McNulty '69  
 Jennifer Marie Grieve McPartland  
 '96, '07  
 Michelle McVay  
 Elizabeth Jane Meehan '85  
 Victoria Porcello Meghdir '69  
 Carol Lee Fisher Megill '96  
 Anne Marie Wychulis Meirowitz '68  
 Mary T. Jacob Melling '99  
 Merrill Lynch & Company  
 Foundation  
 Jeanne Hocker Michels '65  
 Celia Ann Milano '97  
 Michele Elizabeth Walkiewicz  
 Milano '01  
 The Mill at Spring Lake Heights  
 Claire Miller '71

Elizabeth Higgins Miller '82  
 Joann I. Miller '80  
 Josephine Antonietta  
 Lamonica Miller '00  
 Linwood George Miller '00  
 Rory Miller '04  
 Teresa Miller '81  
 Veronica Miller '86  
 Beth Miller-Porter '81  
 Crystal M. Mirabella '07  
 Marie Tomasulo Mirabelli '52  
 Susan Mirra  
 Chris Mitchel  
 Donna Taborn Mitchell '95  
 Mary Peter Damian Mitchell,  
 RSM, '71  
 Maureen K. Wolchko Mitchell '85  
 Haruko Hosano Miyamoto '59  
 Mohegan Sun  
 Mary Andrea Mohr, RSM, '58  
 Theresa Smith Mong '63  
 dede Mumford-Longaker  
 Montgomery, R.N., '92  
 Carol Germann Montgomery '73  
 Kathleen K. Kish Moon '71  
 Theresa O'Connor Moon '64  
 Carol Mooney '68  
 Moonstruck Restaurant  
 Adam Morawski  
 Mariola R. Morawski '05  
 Rita M. Morello '98  
 Patricia Banko Morgan '61  
 Barbara Ann Morrell '92, '96  
 Charles Morris  
 Mary Troy Morris '49  
 Eileen Droesch Morrison '50  
 Dwight and Paula Morss  
 Isabelle Anne Marks Mosca '83  
 Jean Wallace Moseley '68  
 Kathy Coakley Moskal '75  
 Elsa S. Supley Mottola '92  
 Lauren Mueller  
 Karen Mulhall '82  
 Concetta Romano Mulhern '35  
 Marie LaSalle Mullen, RSM, '69  
 Patricia Mulvihill '72  
 Paula Sabosik Murdoch '83  
 Sarah Elizabeth Murphey '89  
 Barbara Murphy '00  
 Catherine Santowasso Murphy '57  
 Mary Jane Apel Murphy '56  
 Patricia A. Murphy '87  
 Pamela A. Musa-Murphy '88  
 Marie Bonsper Myers '72, '82  
 Candice C. Myszka '07

Robert George Nagle '86  
 Carmen Nanni '78  
 June Zacharczyk Neal '74  
 Joanne Raimo Neale '70  
 Maria Janine Nebus '93  
 Helen Neder, RSM, '67  
 Bruce and Carol Nelson '83  
 Justina A. Newman '82  
 Michelle C. Nice '69  
 Tara Nicoletta-Gajano '92  
 Meghan Nicotra '07  
 Kristine Nikola-Heaton '95, '01 and  
 Justin E. Heaton  
 Ruth Anne Nippis '62  
 Eileen Smith Nolan '58  
 Mary Gail Nolan, RSM, '69  
 Elaine Lattell Noonan '89  
 Margaret Mary Noone '78  
 Karen Norby '78



Catherine Wygant Norris '67  
 Mary Denise O'Boyle, RSM, '62  
 Elizabeth Guinane O'Brien '50  
 Mary Beth Quinn O'Brien '63  
 Rita Glavin O'Brien '43  
 Bridget Rafferty O'Connor '70  
 Janice Senkel O'Connor '76  
 Nicole Paulette O'Connor '78  
 Ruth O'Connor '72  
 Jean Jaccard O'Donnell '82  
 Rosemary Finley O'Donnell '83  
 Off Shore  
 Natalie Uzelac Ofsanko  
 Susan L. O'Hara, Ph.D.  
 Kathryn O'Keefe '70  
 Lisa Rose Bocchetti O'Keefe '79  
 Jeanine Oliver, RSM, '70  
 Lisa Ann Zappi Oliver '87, '92  
 Deborah Ann Ollendorf '88  
 Joseph M. Olsavsky Jr. '04  
 Jeanne Ward Olsen '48  
 Mary Jane Ruzzo Omens '70  
 Nancy Parks O'Neil '66  
 Sandra Campbell O'Neil '95  
 Audrey A. Smith O'Neill '73  
 Dorothy Hahn O'Neill '58  
 Katherine Scanlan O'Neill '46  
 Marie and Brian O'Neill

## HONOR ROLL OF DONORS

O'Neill's Bar & Grill  
 Anthony J. Ong '95  
 Andrew J. Orefice '03  
 Mathilda Moser Oros '42  
 Sandra M. Ortman '03  
 Mary Yvonne Osborne, RSM, '63  
 Natalie Ferraro Oties '69  
 Vilma Oxenford '79  
 Marianne Pace '04, '07  
 Karoline Merlino Paci '02, '07  
 Rosanna N. Nivar Paco '04  
 Nancy Ann Padula-Pominek '97  
 Suzanne Palmer-Smiga '85, '98  
 Ana C. Escobar Panayiotou '99, '04  
 Julia Panos '06  
 Lourdes Ortiz Paoli '56  
 Paper Mill Playhouse  
 Mary Ann Regan Papp '83, '05  
 Nina Parisi '82



Maura Parker, RSM, '55  
 Geraldine E. Foley-Moore Parrish '94  
 Linda Perruccio Passanisi '72  
 Alyssa A. Passeggio '07  
 Linda Patch '88  
 Elizabethann Patterson '93  
 Nancy A. Haworth Paul '62  
 Norma Jilbert Paul '92  
 Claire Elizabeth Szucs Pavlinec '96  
 Assunta Santoriello Pavlisko '90  
 Catherine M. Stefanacci Peck '52  
 Linda Carr Peck '64  
 Ellen Jean Pedone '95  
 Robert Pedone  
 Paula Ann Vesce Pelaccio '72  
 Judith Pelczar-Richmond '85  
 Lucia Perez-Delgado '06  
 Susan Rose Fortunato Perrino '93  
 Joanne Rao Perrotta '81  
 John Perrotta '82  
 Marianne Perry '82  
 Valerie B. Perry '01  
 Marianne Damiano Perzel '73  
 Mary-Katherine Peschieri '90  
 Verna Wilson Peters '58  
 Kathryn Petersen '62

Angelique Darlene Miller Peterson '92, '98  
 Don Peterson  
 Lucy Peterson '75  
 Margaret Dee Peterson '62  
 Martha Peters-Rezeli '89  
 Fred C. Petito  
 Arthur Petracco  
 Monica Petracco  
 Patricia A. Petracco '99, '04  
 Nancy Petralia '48  
 Magdalene Simcoe Petrick '46  
 Therese Petrillo  
 Ann Marie Petrizzo '05  
 Fia Corona Pfeiffer '63  
 Mary Ann Kling Phillips '54  
 Piancone's South  
 Frank and Andrea Pickett  
 Lois Brodowski Piet '52  
 Pilot House  
 Barbara Pimental  
 Pitney Bowes  
 Mary Emeric Pitonyak, RSM, '59  
 Mary Evelyn Pitonyak, RSM, '59  
 Karen E. Herbert Pitzner '93  
 Josephine Greco Placa '79  
 Lisa M. Platt '00  
 Christine Morgan Plisky '98  
 Catherine Nelan Pluchino '74  
 PNC Bank Arts Center  
 Debra Nolan Pocci '73  
 Jeanne Jabush Poray '79, '92  
 Marilyn Poretskin '72  
 Susan Ann Swenticky Portaleos '02  
 Jack S. Pova '00  
 Katherine Byrnes Powderly '53  
 Barbara Ann Sanfilippo Preston '99  
 Mary Agnes Prewitt '68  
 Patricia A. Conahan Preziotti '86  
 Jo Ann D. Price '02  
 Margaret Birdsall Price '64  
 Marie Gambal Price '90  
 Olgacy Price '97  
 Princess Maria Diner  
 Kathleen O'Brien Procacci '67  
 Pat and Ed Proniewski '75  
 Carolyn Murray Provencher '78  
 Barbara C. Puglia  
 Patricia Marie Baita Pulchlopek '78  
 Virginia Canis Pumm '89, '97  
 Ann Herron Purcell '52  
 Tamila Zorojew Purpuro '82  
 Annette Putts '80  
 Evelyn Saul Quinn '74  
 Joan McMullen Quirk '86

Laurene M. McDermott Radaszewski '70  
 Arlene R. Monzillo Radman '69, '01  
 Mr. & Mrs. Michael A. Radoslovich '75  
 Elizabeth Rafferty '62, '79  
 Mary L. Ralph '00  
 Kendall R. Wagner Randol '99  
 Mildred Cullen Ranucci '37  
 Cheryl Campilonga Rarick '81  
 Maryanne Raye '58  
 Rosemary Karcher Reavey '62 †  
 Mary Vincent Mills Reck '93  
 Ellen V. Reed '79  
 Carolyn Sackett Platt Reich '80, '89  
 Patricia Remeis '78  
 June Marie Ravert Ribas '94  
 Rosalind Ribaudo '84  
 Sophia Ann Singura Ricciardelli '92  
 Michael and Bonnie Rich  
 Susan Silkowitz Rich '73  
 Kenneth and Barbara Riggione  
 Teresa Marie Bergin Rigney '97  
 Amanda A. Riker '03  
 Barbara A. Shine Riley '76, '81  
 Brenda Soltesz Rinaldi '74  
 Mary Eleanor Ridsen '82  
 Carol Rittner, RSM, D.Ed.  
 Darlene Riva '82  
 Nancy K.P. Latella Rivers '70  
 Cheryl Rafalski Rizzo '81  
 Scott Rizzo '06  
 Diana Rizzolo '97  
 Carol Lynne Newton Robb '94  
 Adelaide Ruggiero Roberts '57  
 Dr. Holly H. Roberts '02  
 Laura Roberts '90, '97  
 Kevin K. Robinson  
 Nina A. Robinson '03  
 NoraAnne Robinson  
 Sandra C. Rodaligo '98  
 Nan McCarthy Rodgers '88  
 Mr. & Mrs. Michael A. Roellke  
 Marty Rogers '51  
 Roseann Torcivia Rohm '76  
 Barbara Carr Roma '88  
 Joanne Spitz Romano '88  
 Jennifer Anne Cascamo Romero, D.O., '89  
 Caroline Heinis Roncin '92  
 Selina Angela Rontino '86  
 Lois Entwistle Roome '77  
 John and Maryann Rosta '65  
 Annette Nietschke Roszak '01  
 Denise DeFillippo Rothstein '79

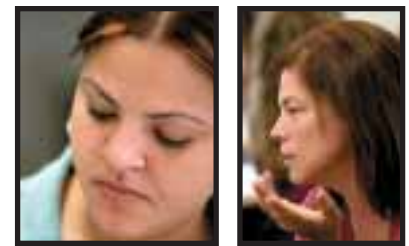
Margaret and George Rover '88  
 Barbara Devoe Rozmus '81  
 Nancy Jane Ruben '80, '88  
 Edwina Rudolph, RSM, '66  
 Suzanne Mathieu Rudy '68  
 Joan M. Rugh '81  
 Joan Wright Ruppert '57  
 Gloria Ann Eleuteri Ruscitti '98, '06  
 Loretta Rusin '04  
 Eileen Russell '70  
 Margaret Russell, RSM, '70  
 Lori A. Buffa Russo '07  
 Tiina Kai Ruubas '78  
 Anne Pionkowski Ryan '55  
 Elizabeth Mary Flood Ryan '89  
 Mary Ryan '81  
 Nancy Jean Lamb Ryan '68  
 Suzanne M. Ryan '00  
 William Ryan '80  
 Edith T. Nestor Saal '96  
 Jaime A. Scotto Sabbatini '98  
 Donna Hayden Sacks '78  
 Patricia A. Classick Sacks '98  
 Leeann Sahner '72  
 Kimberly Sakevich '04  
 Miyuki Sakurai '90  
 Kimberly A. Salafrio Morrison '00  
 Nancy Saling '75  
 Allison Samay  
 Arline Koenig San Antonio '62  
 Mary Gervase San Antonio, RSM, '44  
 Michael Sanderson  
 Christine Sandford '78, '82  
 Sarah Jane Malinowski Sanford '71  
 Narinder Sangari  
 Barbara J. Sanna  
 Angela Marie Sansone  
 Diana Santiago  
 Maria Tremaine Santoro '81  
 Adelina Sassani '55  
 Andrea A. Satorski '93  
 Virginia M. Sauer '91  
 Rita Capelli Saunders '49  
 Damaris Bray Sayce '53  
 SBC Foundation  
 Joy Chin Scally '72  
 Scarborough Fair Restaurant  
 Marne Scarpino '86  
 Douglas J. Schaber '06  
 Lorraine E. Hubert Schaber '05  
 Ann Finnigan Schaefer '89, '96  
 Barbara Nelson Schaller '82  
 Mary Young Schambach '87  
 Dan Schechter

Karen Busch Scheick '80  
 Lynn Aagaard Schell '59  
 Stanley F. Schick  
 Suzanne Schierer '98  
 Patricia Louise Bova Schifferdecker '96  
 Christine Schigotzki '89  
 Barbara Schilling  
 Patricia Loughran Schimpf '55  
 Barbara Bath Schioppa '86  
 Lauren B. Schlameuss '02  
 Christopher E. Schneider '00  
 Katherine Snyder Schneider '46  
 Paul Schneider  
 Elaine Schoenfeld '63  
 Lynda Moore Schortz '76  
 Constance Levinsky Schreiner '58  
 Elizabeth Schriefer  
 Tom and Cheryl Schrier  
 Judith Schubert, RSM, Ph.D., '66  
 Veronica G. Schubert  
 Patricia A. Henry Schuster '81  
 Lisa Anne Schwalje '99  
 Margaret Smith Scoggin '81  
 Gina M. Scollo '07  
 Jane G. Gilchrist Scorca '91  
 Ralph Scorca '90  
 Jeanne Porter Screen, J.D., '83  
 Tanya Hyjek Scully '64  
 Janet M. Seaman '05  
 Rosalind Ogburn Seawright '96  
 Susan Sellarole '96  
 Sean Patrick Semple '98  
 Thomas Semplenski '94  
 Dorothy Siegel Senner '84  
 Ellen G. Martin Sesta '72  
 Judith Beylone Sette '64  
 Catherine Mary Sewnig '02  
 Adrienne Verrilli Seymour '67  
 Mary Seymour, R.N., '91  
 Shadowbrook  
 Georgene Gallagher Sharin '85  
 Stacy L. Sharp '00, '04  
 Sister Pia Shayo  
 Kathleen Wheaton Shearman '86  
 Patrick Sheehan, Esquire  
 Patricia Ann Kidon Shepherd '94  
 Mary Lou Louise Witt Shulas '67  
 Laurine Jankowski Sibilis '81  
 Katharine A. Siciliano '03  
 Carolyn Perri Sikorski '55  
 Natalie Lieberman Silverman '59, '82  
 Debora A. Simon '07  
 Martha J. Simon '03  
 Elaine Ann Gemignani Simpson '87

Anise Singer '75  
 Colleen O'Donnell Singer '70  
 Sharon Lisa Skillman '89  
 Helen Pappas Skopas '50  
 Dennis Edward Slavin '02  
 Elizabeth Conard Slinchak '69  
 Mary Ellen Zigo Slocum '69  
 Arlene Freund Smelson '03  
 Betsy B. Smith '81  
 Don Smith  
 Eileen Smith, RSM, '69  
 Faine Higgins Smith '67  
 James J. Smith  
 Kerry Lynn Smith '06  
 Lois M. Smith '61  
 Margaret Alice VanVechten Smith '89, '04  
 Rebecca A. Smith '98  
 Rosemarie Yandoli Smith '95  
 Diane H. Smith-Gardinella  
 Jane Rockefeller Smyth '47  
 Mary Anne Theresa Smyth '84  
 Marilyn L. Snow '02  
 Jane Bergin Snyder '65  
 Kimberly R. Leuthner Snyder '03  
 Margaret A. Adamski Soltis '94  
 Karen L. Tilton Sommeling '05  
 Michael R. Sommeling '02  
 Melinda Shirk Sonnenfeld '87  
 Michele Grisate Sotelo '99  
 Anita M. Soto '04  
 Donna Zoccola Soultoukis '71  
 Southern Ocean County Chamber of Commerce  
 Frances Kling Spann '62  
 Helen O'Connor Spencer '47  
 Debra Prizer Dickson Spering '90  
 Judith Resch Spicer '69  
 Shelly Ann Spratford '90  
 Spring Lake Community House Theater  
 Spring Lake Liquors  
 Dr. Joseph M. Springer  
 Pamela St. John  
 Angelo Stallone  
 Sandra Jubak Stamos '83  
 Barbara Bowen-Tallentire Stanley '69  
 Helene Elbell Stanton '85  
 Laura W. Staub '97  
 John Henry Stauff '88  
 Theofanis Stavrou  
 Clara J. Raymond Stefane '68  
 Elizabeth Steiner '07  
 Alice A. Kuczynski Stephens '99  
 Tracy L. Dietrich Stephens '92

Dr. Joel Stern '88  
 James Stevens  
 Linda T. Stevens '99, '05  
 Mary Jane Brandwood Stevens '66  
 Robert G. Stevens  
 Virginia West Stevenson '54  
 Gail Stewart Stewart '97  
 Mary Sheila Storm, RSM, '36 †  
 Eileen Stouter '67  
 Edmund K. Stoy  
 Strand Theater  
 Jeanne Limann Streiter '89  
 Rose C. Stroka '03  
 Alicia Alston Stroman '83  
 Steven Strongin  
 Laura Stueber '83  
 Donna Lee Stump '81, '90, '02  
 Stacie Lynn Stutzman '97, '03  
 Sherri L. Walker Sulia '98  
 Mary Catharine Sullivan, RSM, '55  
 Tanya Sullivan  
 Sunny's Imagine Nails  
 Superior Office Systems  
 Surfflight Theater  
 Diane E. Surmonte '04  
 A. Jacqueline Swansinger, Ph.D., '74  
 Helene C. Stroik Swayze '86  
 Ronald Swayze '05  
 Leigh Ann Burgess Sweeney '87, '91  
 Mary Corita Sweeney, RSM, '64  
 Barbara L. Swiss '02  
 Jaclyn M. Swomiak '00  
 Maria Catherine Szymanski-Chludzinski '88  
 Mary Delabar Taft '71  
 Anita Talar, RSM, '65  
 Michael and Marisa Tamaro  
 Margaret M. Tanner  
 Sister Melania Shokole Tarimo  
 Howard L. Tarlo  
 Marianne Buzzerio Tasy '84  
 Mary Louise Schlechtweg Taylor '65  
 Dr. Alan Temes  
 Tenantsafe Inc.  
 Ines Gisondi Terway '71  
 Maria P. Paradiso Testa '07  
 Joanne Theodorou '74  
 Third Avenue Chocolate Shop  
 Carrie Ann Jordan Thomas '89  
 Hilda Velina Thomas '04  
 Jean Taylor Thomas '97  
 Patricia A. Thomas '06  
 Terry Beebe Thomas  
 Denise Purdy Thompson '89  
 Dr. Elaine Thompson

Maria Elena Petta Thompson '86  
 Melissa Lynn Charles Thompson '07  
 Kathleen M. Rafferty Thomsen '82, '05  
 Francisca Thomson-Froumy '76  
 Barbara Martucci Tiberio '69  
 JoAnn Stecher Tier '95  
 Maryann Tierney '94  
 Pamela Kwasnik Tillman '83  
 Francine Carlo Tilton '90  
 Judith Tiplady '80  
 Rebecca G. Todd '03  
 Toms River Fitness  
 Francine R. Tordik '94  
 Patricia A. Shannon Torlucci '75  
 Beth Tormey '95  
 Rosemarie L. Tort '01  
 Sherry Ann Tosun '96  
 Kathleen M. Toto



Patricia L. Towle '83  
 Yayoi Toyama-Ogawa '74  
 Tranquillite Salon & Day Spa  
 Siobann Travers '83  
 Linda Marie Treffinger '86  
 Anita Loverro Tremaroli '57  
 Elena Scuzzese Trentacoste '87  
 Laura Jeanette Stamp Trigani '88, '93  
 Christopher Trigani, Ph.D., '85  
 Barbara Loehfelm Trocciola '65  
 Debra Rose Vierling Trofe '85  
 Sherri Lynn Trometter '92  
 Jennifer M. Watkins Troncone '89  
 Roberta Carol Trotter  
 Marla Johnson Truini '78  
 Amy Lynn Dorn Tsisivis '92  
 Mary Turash '87  
 Theresa Joan Turick '89  
 Arthur Lee Turner '86  
 Dorothy Horton Turner '71  
 Wendy K. Patterson Turnock '02  
 Muriel Roop Turtora '85  
 Patricia Ann Tuting '83, '88  
 Two River Theater Company  
 Delia Licciardiello Tychostup '78  
 Maureen Martinasco Tyhanic '98  
 Eleanor M. Courter Unger '01

## HONOR ROLL OF DONORS

Janice Urban '87  
 Lynda Mann Urban '65, '80  
 Maria Ursino '75, '84  
 Gloria Sibek Usher '49  
 Regina A. Grant Vahey '68  
 Vanessa Vaiti-Moss '92, '01  
 Carla Frumusa Valentino '79  
 Margaret A. Valliere-Pszczola '92  
 Ilene Veronica VanDuyne '81  
 Anna Vardakis '06  
 Jo-An Vargo '68  
 Lynn P. Vazquez-Rizzo '88, '93, '00  
 Sarah C. Veit '02  
 Mark Velazquez  
 Maureen E. Vena  
 Jayne Rivers Veneziano '77  
 Theresa A. Venneri '02  
 Jessica A. Ventrello '03, '07  
 Kammie L. McKay Verdolina '02  
 Helen Mary Sutton Verity '84  
 Verizon Foundation  
 Karen J. Vesely  
 Emily Alfonso Vidal, R.N., '92, '98  
 Anna Videtti '86  
 Sheila M. Vidreiro '04  
 Villa Amalfi  
 Deborah Vincent '81  
 April Vitulli  
 Kathleen Hern Vreeland '75  
 Thomas Joseph Waddleton  
 Frank J. Wagner  
 Barbara Ann Pennente Wainwright '82

Margaret Waldron, RSM, '67  
 Joy R. Walker '02  
 Deborah Wallace '79  
 Christopher B. Ward '05  
 Maureen Ryan Ward '92  
 Eileen Leyshon Warman '52  
 Mariluise Jones Warner '60  
 Shelley J. Lynch Wasilewski '73, '95  
 Evelyn Paula Watts '76, '80  
 Dr. Andrew J. Weber  
 Marjon N. Weber '02  
 Mary Wei  
 Gail Harper Weibrecht '90  
 Alan Wein  
 Sharon E. Weiss  
 April LaBella Wellikoff '76  
 Audrey Tatko Wendolowski '90  
 Diane Wenz '60  
 Lawrence Werger '84  
 Jane Russell Werner '75  
 Sharon Lynne Wessel '02  
 Lisa A. Westerfield  
 Patrice D. Donnelly Whaling '57  
 Jo Ella Wheeler '78  
 Nancy Wheeler '81, '95  
 Susan Normile Wheeler '83  
 Julie M. Oxford Whelan '98, '05  
 Carole Ayres White '64  
 Elizabeth Zauner White '88, '05  
 Patricia Keating White '50  
 Barbara Trainor Whitner '65  
 Wild Oats Natural Marketplace  
 Catherine Wilkes McKee '89

Raymond and Judith Willbergh '87  
 Barbara Anne Williams, RSM, '63  
 Gail Muccilli Williams '63  
 Mary A. Williams  
 Vanessa M. Williams  
 Susan Jane Willmott '87  
 Adelaide Carlin Wilson '39  
 Alisa Beth Hicks Wilson '04  
 Linda L. Larson Wilson '91  
 Elaine Wilson-Holz '68  
 Colleen Winn '85  
 Mary Ellen Frinzi Winter '72  
 WJRZ, Greater Media Inc.  
 Greg Wojciehowski  
 Lynn E. Wojciehowski  
 P. Diane Janis Wood '68  
 Teresa Onimus Wood '83  
 Karen F. Woodfin '04  
 Eleanore Grainda Woodring '63  
 Laurie Martini Woodward '96  
 Susan Ann Wrable-Scott '85  
 Donna Maria Rowan Wright '97  
 Amanda A. Wussow '00, '06  
 Delores Wyatt '82  
 Susan Wylie '79  
 Zara Peters Wynn '86  
 Christine E. Cole Yaccarino '00, '04  
 Denise Hamrah Yatrakis '71  
 Nancy Yeger '85  
 Deborah Corbin Young, C.P.A., '85  
 Judith Ann Weiss Yozzo '65  
 Jenny Chen Yu '57  
 Nancy Ladd Zachem '79

Sheri L. Zager '04  
 Leona McGinley Zahn '82  
 Anneliese M. Zappia '05  
 Shirley-Jo Zatorski '92  
 Linda Marie Morrissey Zelek '99  
 Susan Walsh Zielinski '61  
 Leslie O. Zimring '02  
 Mary Stanislaus Zita, RSM, '67  
 Carol Weissenborn Zsiga '71  
 Loretta Schaefer Zucconi '64  
 Loretta Giammalvo Zupa '65  
 David Zurheide '86  
 Roxanne Zygmund

*Every effort is made to ensure accuracy in these listings. The Office of Institutional Advancement regrets any omission that may have occurred.*



## CLASS GIVING

Class Year	Amount	Percentage
1933	\$0	0%
1934	\$300	33%
1935	\$11,588	100%
1936	\$2,008,850	40%
<b>1937</b>	<b>\$101,932</b>	<b>57%</b>
1938	\$100	29%
1939	\$535	44%
1940	\$1,400	33%
1941	\$250	11%
<b>1942</b>	<b>\$640</b>	<b>50%</b>
1943	\$183	25%
1944	\$61,225	33%
1945	\$1,250	13%
1946	\$450	38%
<b>1947</b>	<b>\$5,925</b>	<b>45%</b>
1948	\$3,825	43%
1949	\$3,091	48%
1950	\$1,680	41%
1951	\$14,735	44%
<b>1952</b>	<b>\$2,155</b>	<b>49%</b>
1953	\$1,075	30%
1954	\$3,285	36%
1955	\$1,185	46%
1956	\$71,755	40%
<b>1957</b>	<b>\$2,616</b>	<b>48%</b>
1958	\$2,775	51%
1959	\$6,549	52%
1960	\$17,976	41%
1961	\$1,788	44%
<b>1962</b>	<b>\$8,725</b>	<b>40%</b>
1963	\$18,424	45%
1964	\$19,568	40%
1965	\$4,036	41%
1966	\$25,535	35%
<b>1967</b>	<b>\$8,729</b>	<b>46%</b>
1968	\$9,732	42%
1969	\$52,462	33%

Class Year	Amount	Percentage
1970	\$2,834	21%
1971	\$14,135	27%
<b>1972</b>	<b>\$5,367</b>	<b>27%</b>
1973	\$22,920	28%
1974	\$3,598	21%
1975	\$13,601	25%
1976	\$5,321	24%
<b>1977</b>	<b>\$2,805</b>	<b>15%</b>
1978	\$4,656	26%
1979	\$3,370	20%
1980	\$1,888	16%
1981	\$17,848	19%
<b>1982</b>	<b>\$5,420</b>	<b>24%</b>
1983	\$9,530	16%
1984	\$2,410	12%
1985	\$2,770	16%
1986	\$1,815	15%
<b>1987</b>	<b>\$4,075</b>	<b>17%</b>
1988	\$1,975	15%
1989	\$2,425	14%
1990	\$1,043	9%
1991	\$1,788	9%
<b>1992</b>	<b>\$4,120</b>	<b>12%</b>
1993	\$1,850	7%
1994	\$1,502	7%
1995	\$22,975	9%
1996	\$1,695	7%
<b>1997</b>	<b>\$4,500</b>	<b>11%</b>
1998	\$1,975	9%
1999	\$2,032	9%
2000	\$4,327	12%
2001	\$1,655	7%
<b>2002</b>	<b>\$1,646</b>	<b>9%</b>
2003	\$1,170	6%
2004	\$2,948	9%
2005	\$1,710	5%
2006	\$3,422	5%
<b>2007</b>	<b>\$1,193</b>	<b>8%</b>

## SPECIAL LISTINGS

### DEDICATION GIFTS

#### Gifts in Honor of

Class of 1940  
Class of 1971  
Class of 1977 30<sup>th</sup> Reunion  
Reverend Norman Demeck, C.P.  
Leonard and Mary Fiore  
Will C. Frank  
Carol Fine Hart '79  
Eileen Loehfelm, RSM, '74 †  
Raymond and Alice O'Donnell  
Judith Schubert, RSM, Ph.D., '66  
Mary Stephanie Sloyan, RSM, '39  
Maria Cordis Richey, RSM, Ph.D., '50  
Eleanor M. Weisbrod '44

### MEMORIAL GIFTS

#### Gifts in Memory of

Georgene Briordy  
David J. Brunelle  
Robertine Bulman, RSM  
Alexander Burke  
Jim and Marguerite Caprio  
Michael Carol  
Elizabeth Casey '35  
Mr. & Mrs. Li-Fu Chen

Mary Edler Cleary  
Patrick Robert Clynes  
Margaret Cummings  
Madeleine Kelly Demetrio '37  
Mary Loretto Snite Dillon '37  
Marian J. Evans  
Joseph C. Finan  
Cathryn J. Fine '78, '88  
Katherine H. Fischetti  
James and Alberta Flaherty  
Mary Margaret Foley, RSM, '48  
Jeanine M. Resetar Gerke '97, '98  
Kate Grant  
Margery and Marmaduke Grove  
George and Helen Hamrah  
Charles Ellis Hesse  
Margaret Schwarz Hausmann '35  
Charlotte L. Hudson-Washington '74  
Catherine Huisiking, Charles Huisiking, and Frances Huisiking  
Andrea Jeremy, Ph.D., '68  
Gail Judge '57 †  
Marianna L. and Dominic J. Landolfi  
Florian J. Lombardi  
Robert MacFarlane  
Dorothy Jamin Marron '36

Patricia Bremer McCuen '49  
Margaret Meisel  
William and Mary O'Donnell  
Walter A. O'Leary  
Mary Pius  
Carol Petruska Ramirez '64  
John and Laura Ravizza  
Bob Roggy  
Walter W. Ruszczyk  
Dr. Manuel Salas  
Mary Sheila Storm, RSM, '36  
Helen T. Sutton  
JoAnne Sutton '76  
Brian Travers  
Leonard J. Tucknott  
Mr. & Mrs. Solomen Weil  
Ruth Weisbrod '46

### MATCHING GIFT COMPANIES

ACE INA  
AT&T Foundation  
The Bank of New York  
ExxonMobil Foundation  
General Electric Foundation  
IBM Corporation



# INDEPENDENT COLLEGE FUND OF NEW JERSEY

The IFF Foundation Inc.  
 International Paper Company  
 Foundation  
 Johnson & Johnson Family  
 of Companies  
 LandAmerica Financial Group  
 Lockheed Martin  
 L'Oreal USA Inc.  
 Merrill Lynch & Company  
 Foundation  
 J. P. Morgan Chase Foundation  
 New Jersey Resources Corporation  
 Pfizer Inc.  
 Pitney Bowes  
 Prudential Foundation  
 Sallie Mae, Office of  
 Community Relations  
 SBC Foundation  
 Siemens  
 The Toa Reinsurance  
 Company of America  
 Verizon Communications  
 Verizon Foundation  
 Wachovia Corporation

## INDEPENDENT COLLEGE FUND OF NEW JERSEY

*Georgian Court University continues to benefit from generous corporate and foundation support given through the Independent College Fund of New Jersey. Begun in 1953, the fund makes a single, united annual request to corporations and foundations on behalf of the 14 member colleges. For 53 years, the fund has continued to secure corporate financial support for the state's independent colleges and to promote a greater understanding of the importance of maintaining the opportunity for choice between public and private education.*

*The Independent College Fund of New Jersey represents all of the state's fully accredited, privately controlled colleges and universities, except those that are engaged primarily in religious studies.*

*The following donors contributed to the fund in calendar year 2006. Most gifts are allocated by formula although a number are designated to specific institutions. Support in 2006 for independent higher education in New Jersey through the fund totaled \$1,503,050.64.*

Alcatel-Lucent  
 Amboy National Bank  
 Amelior Foundation and  
 The MCJ Foundation  
 ASCO  
 Edward J. Bambach  
 Banc of America Corporate  
 Insurance Agency, L.L.C.  
 Bank of America  
 C. R. Bard Foundation Inc.  
 Baumeister & Samuels, P.C.  
 The Elsie E. & Joseph W. Beck  
 Foundation  
 Patricia L. Beirne  
 Berlex Laboratories Inc.  
 Mr. and Mrs. H. Mercer Blanchard Jr.  
 Bollinger Insurance  
 Booz Allen & Hamilton Inc.  
 Bristol-Myers Squibb Company  
 E. J. Brooks Company  
 Brother International Corporation  
 Anthony Browne  
 Business World Inc.  
 Caldwell College  
 Thomas D. Carver

Celgene Corporation  
 Centenary College  
 Coca-Cola Enterprises  
 J. H. Cohn, L.L.P.  
 Colgate-Palmolive Company  
 College of Saint Elizabeth  
 John G. and Patricia A. Collins  
 Columbia Bank  
 Commerce Bank  
 Construction Technology  
 Corporation and Associates,  
 All-Pro Title, Broderick,  
 Newmark & Grather, Chelsea  
 Development Inc., ConServe  
 Construction  
 Corporation, Elite Roofing &  
 Maintenance Inc., Educational &  
 Hutton  
 Construction, L.L.C., Jim O'Brien  
 Architects, Lippo  
 William J. Cozine  
 Culinary Ventures Vending  
 Dassault Falcon Jet Corporation  
 Datascope Corp.  
 Deloitte Services, L.P.  
 Mike DePasquale  
 Dr. Joseph V. Doria Jr. Scholarship  
 Fund Inc.  
 Drinker Biddle & Reath, L.L.P.  
 Lisa Donoghue  
 Joseph A. Driscoll  
 Edone & Company, P.A.  
 Edwards and Kelcey  
 Embarq  
 Engelhard Corporation  
 Erbach Communications Group Inc.  
 Ernst & Young, L.L.P.  
 Evergreen Partners Inc.  
 Fairleigh Dickinson University  
 Felician College  
 Stephen Ferroni  
 FIHE Partnership for Private Colleges  
 Ford Motor Company  
 William S. Ford Jr.  
 Gabel Associates  
 John W. Galiardo  
 Christopher J. Gobbo  
 Martha Clark Goss  
 Gourmet Dining, L.L.C.  
 Mr. and Mrs. Patrick J. Grant  
 Mark Thomas Greenquist  
 Vincent A. Grillo  
 William E. Hamm  
 The Hartford  
 Haven Savings Bank  
 Michael J. Healy  
 Hillier Architecture

Honeywell International Inc.  
 J. M. Huber Corporation  
 Hurley Associates Safety Training,  
 L.L.C.  
 IBM Corporation  
 Investors Savings Bank  
 Jersey Central Power & Light  
 Johnson & Johnson Family of  
 Companies  
 Francis J. Kilkenny  
 F. M. Kirby Foundation Inc.  
 KPMG, L.L.P.  
 Kroll Zolfo Cooper, L.L.C.  
 LaTorre Family Fund  
 Lawson Products Inc.  
 Leadership Solutions Consulting  
 Liberty Mutual Group,  
 The Boston Foundation  
 James J. Loughlin  
 Maher Terminals Inc.  
 Peter P. Malecki  
 Marts & Lundy Inc.  
 Robert J. Materna  
 McCarter & English, L.L.P.  
 Merrill Lynch New Jersey  
 Robert J. Merritt  
 Dr. and Mrs. Francis J. Mertz  
 Lynn M. Mertz  
 Millington Savings Bank  
 Monmouth University  
 MTM Business Forms Inc.  
 Robert W. Mueller  
 New Jersey Alliance for Action  
 New Jersey-American Water  
 New Jersey Natural Gas  
 Company Charity Inc.  
 Samuel I. Newhouse Foundation  
 Inc. and The Star-Ledger  
 NJM Insurance Group  
 Nordstrom  
 North Fork Bank of New Jersey  
 North Jersey Media Group Inc.  
 Novartis Pharmaceuticals  
 Corporation  
 Organon Inc.  
 Joan A. Panacek  
 Panella Family  
 Pathmark Supermarkets  
 Pfizer Inc.  
 PICK Foundation Inc.  
 PMK Group  
 PNC Bancorp  
 Robert J. Polakowski  
 David G. Powell  
 PricewaterhouseCoopers, L.L.P.  
 The Provident Bank

## OFFICE OF INSTITUTIONAL ADVANCEMENT

**Margaret A. Huber, Ph.D.**  
Vice President for Institutional Advancement  
732.987.2267

**Stacey Abate**  
Director of Grants Development  
732.987.2393

**Ross H. Basen, C.F.R.E.**  
Director of Annual Giving  
732.987.2280

**Marcia Dickinson '02**  
Advancement Specialist  
732.987.2276

**Stephanie A. Ferrier**  
Campaign Director  
732.987.2392

**David Harnett, Ph.D.**  
Director of Foundation & Government Relations  
732.987.2275

**Cynthia Isdanavage**  
Director of Alumni Relations  
732.987.2244

**Cynthia Lisowski '83, '95, '06**  
Director of Data Management & Prospect Research  
732.987.2231

**Eileen Loehfelm, RSM, '74 †**  
Director of Donor Relations

**Maja Mariano Meighan '93, '04**  
Director of Planned Giving  
732.987.2105

Published by the Office of Public Information & University Communications

**Ruth Ann Burns, Managing Editor**

**Deborah Gilleran, Editor**

**Kathleen Guilfoyle, Photo Editor**

**Elizabeth Brennan, Assistant Editor**

**Tara M. Strickland, Associate Editor**



"Injustice anywhere is a threat  
to justice everywhere."

MARTIN LUTHER KING JR.



## GEORGIAN COURT UNIVERSITY

*A tradition of excellence...a future of success*

Office of Institutional Advancement  
900 Lakewood Avenue  
Lakewood, New Jersey 08701-2697

[www.georgian.edu](http://www.georgian.edu)

NON-PROFIT ORG.  
U.S. POSTAGE  
PAID  
AFFILIATED MAILING

5211 RT. 33  
FARMINGDALE, NJ 07727